

TheFloridaGapMap.org

[HOME](#)[ABOUT](#)[FOUNDATION](#)[ADVOCACY](#)[POLITICAL](#)[GLOBAL](#)[EVENTS](#)[SAFETY](#)[COVID-19](#)[DONATE](#)[LOGIN](#)

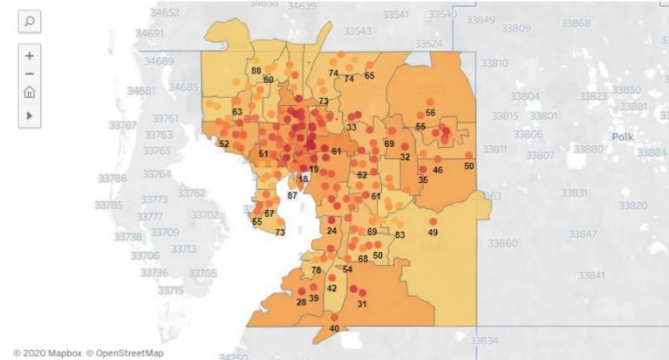
Florida's Gap Map brings together the important work of our Business Alliance for Early learning and our Prosperity Initiative. By using the information provided below, business and community leaders across Florida can see which schools during the 2018-19 school year had children who were not able to pass the *Department of Education Florida Standards Assessments with a Level 3 or higher. In addition, the map also provides the poverty rate for children under 18 in each zip code.

We want to put a focus on what we can do at the school level, the zip code level and the community level to help our kids. We can change the trajectory of what's going to happen in these kids' lives.

Mark Wilson

President & CEO

Florida Chamber of Commerce



© 2020 Mapbox © OpenStreetMap

Third grade reading scores are available below for each of the elementary schools in the county. Scroll down to see all of the school listings.

Elementary School Reading Scores in Hillsborough County

School Name	Kids Not Reading At Grade Level	Third Grade Reading Score
ADVANTAGE ACADEMY OF HILLSBOROUGH	29	45
ALAFIA ELEMENTARY SCHOOL	21	80
ALEXANDER ELEMENTARY SCHOOL	42	51
ANDERSON ELEMENTARY SCHOOL	28	53
APOLLO BEACH ELEMENTARY SCHOOL	24	78
AVANT GARDE ACADEMY WESTCHASE	12	65

How Can You Get Involved?

- Learn more about the children who are struggling in your community by using the **Florida Gap Map** below.
- Join the **Prosperity Initiative** and find out who the zip code leaders are in your community. To learn about additional opportunities, contact Michael Williams – mwilliams@ffoundation.org
- Join the **Business Alliance for Early Learning** and help raise awareness on how important a child's earliest years are to their future success.
- Help Secure Florida's Future by **supporting the efforts** of the Florida Chamber Foundation. To learn more, contact Aaron Kinnon – akinnon@ffoundation.org.

TheFloridaGapMap.org Q&A



Mark Wilson
President and CEO
Florida Chamber of Commerce



Dr. Jerry Parrish
Chief Economist
Florida Chamber Foundation



Donna Wright
COO
Florida Chamber Foundation
Leads the Business Alliance
for Early Learning



Michael Williams
Executive Director
Florida Prosperity Initiative
Florida Chamber Foundation

TheFloridaGapMap.org

[HOME](#)[ABOUT](#)[FOUNDATION](#)[ADVOCACY](#)[POLITICAL](#)[GLOBAL](#)[EVENTS](#)[SAFETY](#)[COVID-19](#)[DONATE](#)[LOGIN](#)

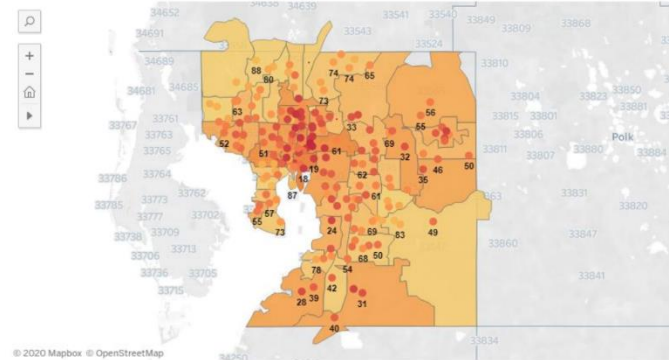
Florida's Gap Map brings together the important work of our Business Alliance for Early learning and our Prosperity Initiative. By using the information provided below, business and community leaders across Florida can see which schools during the 2018-19 school year had children who were not able to pass the *Department of Education Florida Standards Assessments with a Level 3 or higher. In addition, the map also provides the poverty rate for children under 18 in each zip code.

We want to put a focus on what we can do at the school level, the zip code level and the community level to help our kids. We can change the trajectory of what's going to happen in these kids' lives.

Mark Wilson

President & CEO

Florida Chamber of Commerce



© 2020 Mapbox © OpenStreetMap

Third grade reading scores are available below for each of the elementary schools in the county. Scroll down to see all of the school listings.

Elementary School Reading Scores in Hillsborough County

School Name	Kids Not Reading At Grade Level	Third Grade Reading Score
ADVANTAGE ACADEMY OF HILLSBOROUGH	29	45
ALAFIA ELEMENTARY SCHOOL	21	80
ALEXANDER ELEMENTARY SCHOOL	42	51
ANDERSON ELEMENTARY SCHOOL	28	53
APOLLO BEACH ELEMENTARY SCHOOL	24	78
AVANT GARDE ACADEMY WESTCHASE	12	65

How Can You Get Involved?

- Learn more about the children who are struggling in your community by using the **Florida Gap Map** below.
- Join the **Prosperity Initiative** and find out who the zip code leaders are in your community. To learn about additional opportunities, contact Michael Williams – mwilliams@ffoundation.org
- Join the **Business Alliance for Early Learning** and help raise awareness on how important a child's earliest years are to their future success.
- Help Secure Florida's Future by **supporting the efforts** of the Florida Chamber Foundation. To learn more, contact Aaron Kinnon – akinnon@ffoundation.org.

FLChamber.org/EarlyLearning



[#Learners2Earners](#)

[#EarlyLearning](#)

A SPECIAL THANKS TO OUR
**BUSINESS ALLIANCE FOR EARLY LEARNING
STEERING COMMITTEE MEMBERS**



ProsperityFL.org



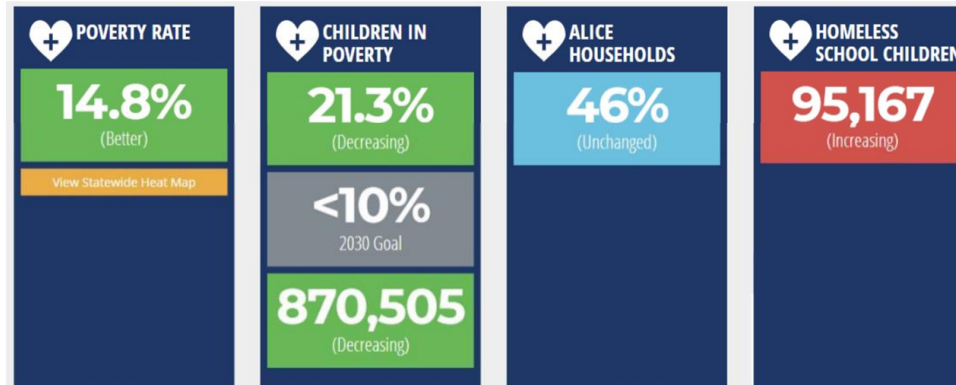
Michael Williams
Executive Director of the Florida Prosperity Initiative

Email: mwilliams@flfoundation.org
Phone: [850.521.1284](tel:850.521.1284)

Find Your County's Poverty Rate

Florida has more than 3 million people living in poverty, or 14.8 percent. 870,505 of that total, or 21.3 percent, are under the age of 18. This is compared to the national overall poverty rate of 11.85 percent and 16.27 percent for national under-18. The sheer number of Floridians living in poverty in our state impacts not only individual families, but also businesses, Florida's economy, and our state's global competitiveness.

To download your county map with the Under 18 Poverty Rate of each zip code,
visit www.FloridaChamber.com/ProsperityMaps



Visit TheFloridaScorecard.org for data on your county's poverty rates, ALICE households, and more.

#ProsperityFL

Thank You For Joining us For...

**Another Florida Chamber
Foundation Discussion on
Closing Florida's Equity Gaps**