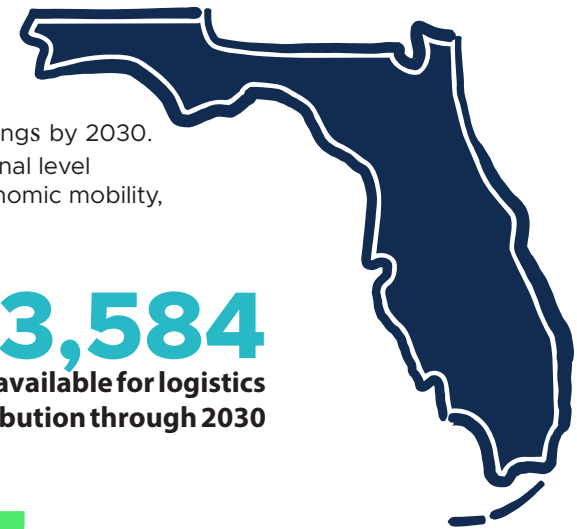


# LOGISTICS & DISTRIBUTION CAREER PATHS



Career pathways provide visual examples for students and incumbent workers to connect learning and earning. For example, there are several career opportunities in logistics and distribution, an industry with more than 170,000 job openings by 2030. This graphic provides an individual with career, and salary ranges, beginning with high school, and continuing to the professional level education. As Florida continues to build strong talent pipelines aligned to industry needs, with a focus on prosperity and economic mobility, career pathways provide a tool that will help individuals make informed decisions about education and careers.

## 724,277 jobs statewide

- Key sub-baccalaureate opportunities:  
Truck drivers | Service technicians | Aircraft mechanics
- Greatest projected long-term skills gaps:  
Wholesale and manufacturing sales representatives | Shipping and receiving

**173,584**  
Projected jobs available for logistics  
& distribution through 2030

	 <b>PROCESS DEVELOPMENT</b>	 <b>QUALITY ASSURANCE</b>	 <b>SERVICES</b>
<b>HIGH SCHOOL</b> or GED	LABORERS AND FREIGHT, STOCK & MATERIAL MOVERS <b>\$11.00-\$16.00</b> HOURLY RATE	MAINTENANCE & REPAIR WORKERS, GENERAL <b>\$12.00-\$25.00</b> HOURLY RATE	SHIPPING, RECEIVING & TRAFFIC CLERKS <b>\$13.00-\$19.00</b> HOURLY RATE
<b>CERTIFICATE</b> or <b>DIPLOMA</b> (1-2 years)	INDUSTRIAL TRUCK & TRACTOR OPERATORS <b>\$14.00-\$21.00</b> HOURLY RATE	INDUSTRIAL MACHINERY MECHANICS <b>\$18.00-\$32.00</b> HOURLY RATE	DELIVERY SERVICES DRIVERS <b>\$12.00-\$16.00</b> HOURLY RATE
<b>ASSOCIATE DEGREE</b> (2 years)	FIRST-LINE SUPERVISORS OF PRODUCTIONS & OPERATING WORKERS <b>\$22.00-\$38.00</b> HOURLY RATE	TECHNICAL & SCIENTIFIC PRODUCTION <b>\$19.00-\$40.00</b> HOURLY RATE	SALES REPRESENTATIVES, WHOLESALE & MANUFACTURING <b>\$19.00-\$40.00</b> HOURLY RATE
<b>BA / BS</b> (4 years)	GENERAL & OPERATIONS MANAGERS <b>\$31.00-\$76.00</b> HOURLY RATE	LOGISTICS ENGINEER <b>\$27.00-\$35.00</b> HOURLY RATE	SUPPLY CHAIN MANAGER <b>\$38.00-\$71.00</b> HOURLY RATE

## FLORIDA JOBS 2030

*Pathways 2030* provides career paths for the five industries highlighted in the **Florida Chamber Foundation's Florida Jobs 2030 Report**.



Middle-skill jobs represent a high growth career path for logistics and distribution. Middle-skill jobs require a high school diploma and some postsecondary degree or credential below a bachelor's degree. Middle-skill occupations represent a critical opportunity for both education and workforce development initiatives.