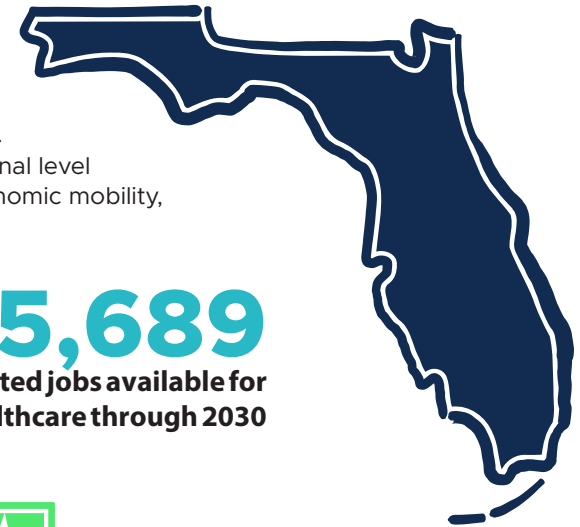


HEALTHCARE CAREER PATHS


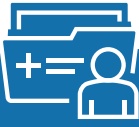


Career pathways provide visual examples for students and incumbent workers to connect learning and earning. For example, there are several career opportunities in healthcare, an industry with more than 200,000 job openings by 2030. This graphic provides an individual with career, and salary ranges, beginning with high school, and continuing to the professional level education. As Florida continues to build strong talent pipelines aligned to industry needs, with a focus on prosperity and economic mobility, career pathways provide a tool that will help individuals make informed decisions about education and careers.



810,381 jobs statewide

- Key sub-baccalaureate opportunities:
Medical assistants | Licensed practical nurses | Registered nurses
- Greatest projected long-term skills gaps:
Medical records and health information technicians

235,689
Projected jobs available for
healthcare through 2030

	 PATIENT CARE NURSING	 MEDICAL ADMINISTRATION & OPERATIONS	 IMAGING & HEALTH INFORMATICS
 HIGH SCHOOL or GED	CERTIFIED NURSING ASSISTANT HOME HEALTH AIDE \$10.00-\$15.15 HOURLY RATE	RECEPTIONIST CUSTOMER SERVICE REPS \$10.00-\$14.00 HOURLY RATE	MEDICAL BILLING \$12.00-\$20.00 HOURLY RATE
CERTIFICATE or DIPLOMA (1-2 years)	LICENSED PRACTICAL NURSE MESSAGE THERAPISTS EMERGENCY MEDICAL TECHNICIANS \$15.00-\$25.00 HOURLY RATE	MEDICAL ADMINISTRATIVE ASSISTANT \$18.00-\$22.00 HOURLY RATE	MEDICAL RECORDS HEALTH INFORMATION TECHNICIANS \$14.00-\$30.00 HOURLY RATE
ASSOCIATE DEGREE (2 years)	REGISTERED NURSES \$22.00-\$37.00 HOURLY RATE	BIOMEDICAL TECHNICIAN \$17.00-\$25.00 HOURLY RATE	RADIOLOGIC TECHNOLOGISTS DIAGNOSTIC MEDICAL SONOGRAPHERS \$16.00-\$38.00 HOURLY RATE
BA / BS or POST-GRADUATE (4 years+)	NURSE PRACTITIONERS NURSE ANESTHETIST \$49.00-\$58.00 HOURLY RATE	HEALTHCARE ADMINISTRATION \$25.00-\$47.00 HOURLY RATE	CLINICAL LAB SCIENTIST \$25.00-\$37.00 HOURLY RATE

FLORIDA JOBS 2030

Pathways 2030 provides career paths for the five industries highlighted in the *Florida Chamber Foundation's Florida Jobs 2030 Report*.



Middle-skill jobs represent a high growth career path for healthcare. Middle-skill jobs require a high school diploma and some postsecondary degree or credential below a bachelor's degree. Middle-skill occupations represent a critical opportunity for both education and workforce development initiatives.