



**JERRY D.
PARRISH, PH.D.**

**Chief Economist
Florida Chamber Foundation**

**jparrish@flfoundation.org
@DrJerryParrish**

www.theFloridaScorecard.org

Thousands of data points for state and counties

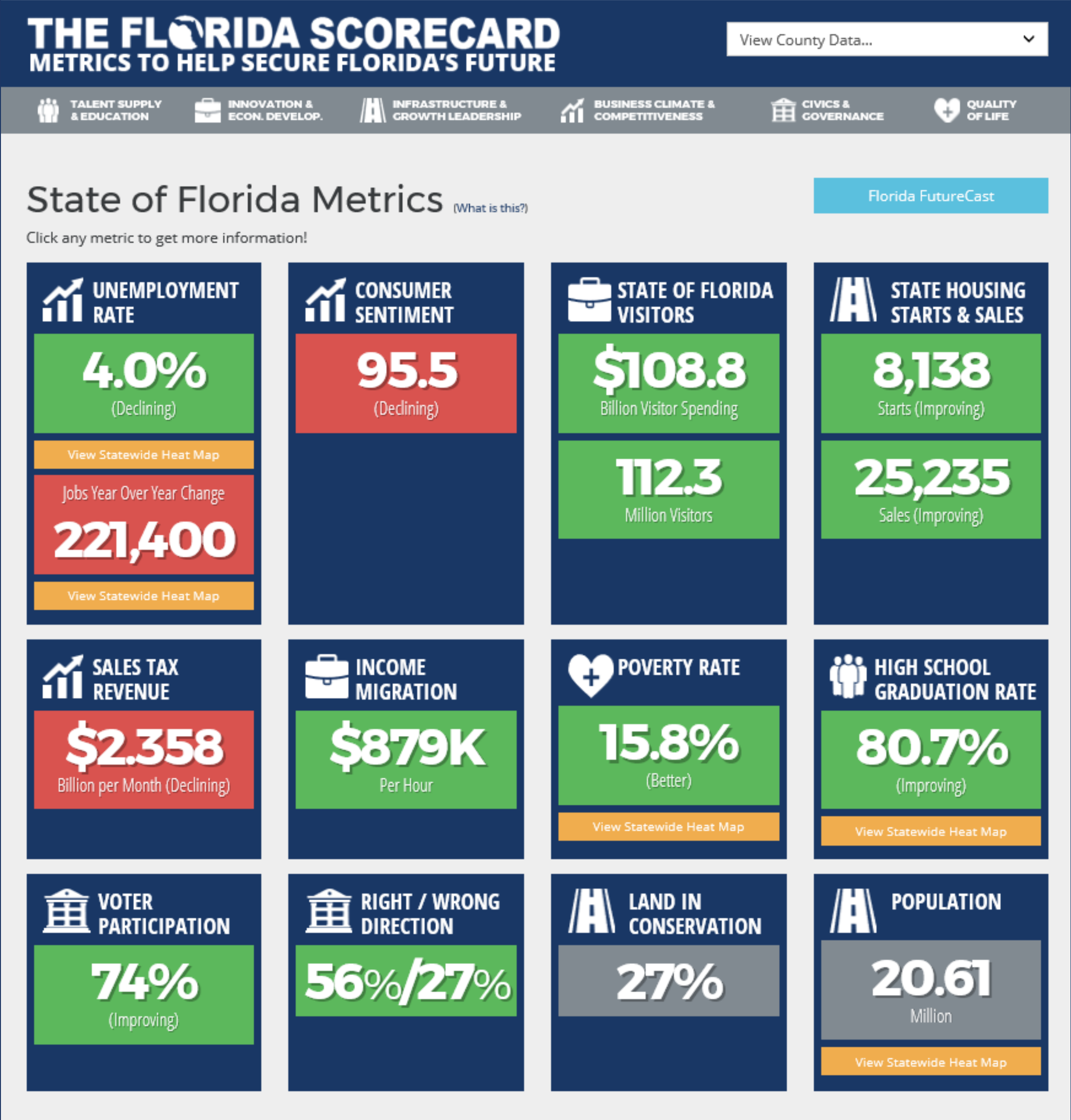
Each “tile” is live – links to downloadable chart

Raw data is downloadable

Sources are identified and linked

Each of Florida’s 6 Pillars have additional data

Heat maps available for many metrics





State of Florida Metrics (What is this?)

Florida FutureCast

Talent Supply & Education

Click any metric to get more information!



3RD GRADE SCORES

58%

Reading (Improving)

[View Statewide Heat Map](#)

62%

Math (Improving)



8TH GRADE SCORES

55%

Reading (Declining)

46%

Math (Declining)

48%

Science (Unchanged)



NATIONAL 4TH GRADE RANKINGS

18th

Math (Improving)

10th

Reading (Declining)



NATIONAL 8TH GRADE RANKINGS

42nd

Math (Declining)

32nd

Reading (Declining)



HIGH SCHOOL GRADUATION RATE

80.7%

(Improving)



COLLEGE AFFORDABILITY

2nd

4 Year (Unchanged)

11th

2 Year (Unchanged)



EDUCATIONAL ATTAINMENT

28.6%

Bachelor (Improving)

[View Statewide Heat Map](#)

87.4%

High School (Declining)



ASSOCIATE DEGREES

38.3%

(Improving)

Planning the Future Through Research

2017 – Florida's Fiscal Cliffs Report

2017 – Florida Jobs 2030

2016 – From Excuses to Excellence

2016 – Strategic Look at Medical Tourism

2013 – Florida Trade and Logistics Study 2.0

2011 – Immigration and Florida's Economy

2010 – Florida Trade and Logistics Study

2010 – Closing the Talent Gap

2007 – New Cornerstone Revisited

2006 – Florida Summit on Affordable Living

2003 – New Cornerstone: Foundations for Florida's Economy into the 21st Century

1999 – Transportation Cornerstone Florida

1997 – International Cornerstone Florida

1994 – No More Excuses: What Business Must Do To Improve Florida's Schools

1991 – Enterprise Florida: Partnership for a Competitive Economy

1990 – Crossroads: Designing Florida's Tax Structure

1989 – Enterprise Florida: Growing the Future

1989 – Cornerstone: Foundations for Economic Leadership

1986 – The Role of Privatization in Florida's Growth



FLORIDA JOBS 2030

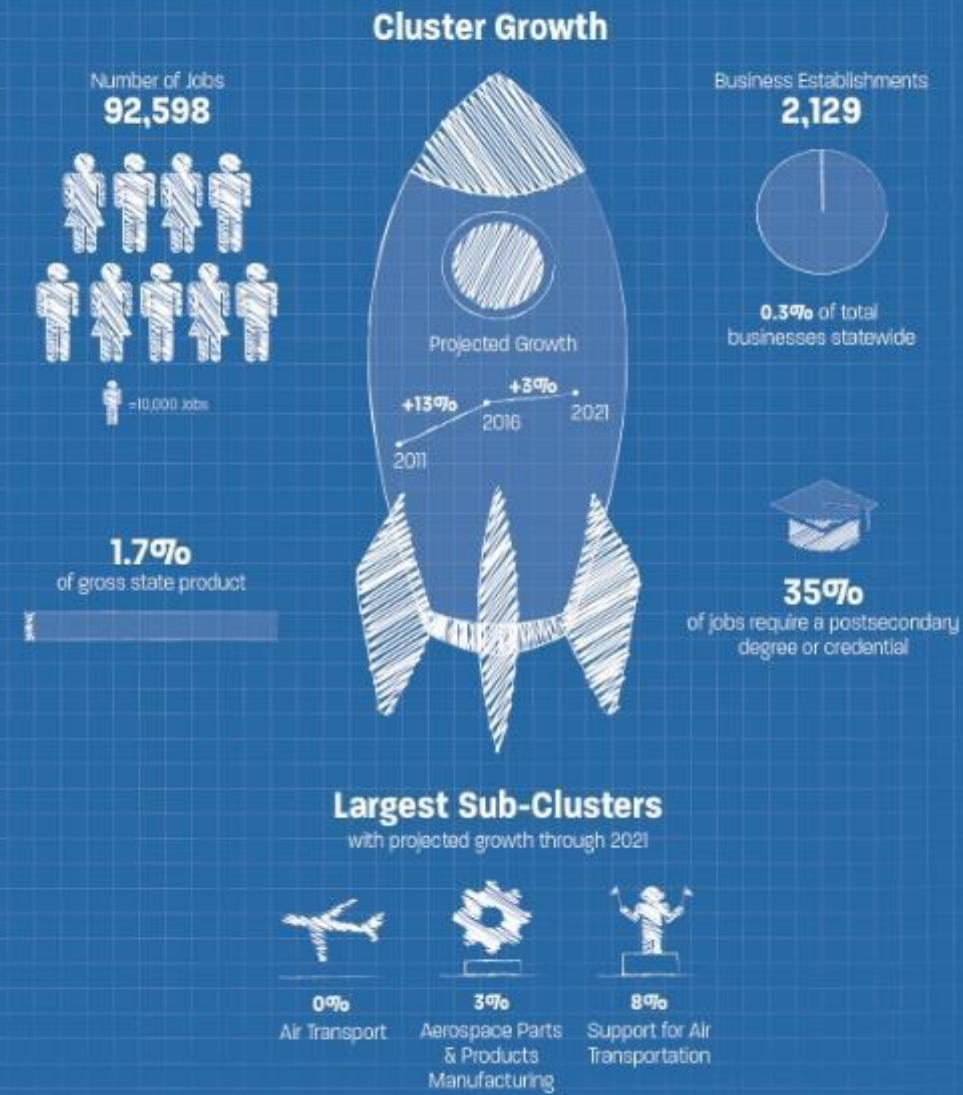
A Cornerstone
Series Report For
the Florida 2030
Initiative



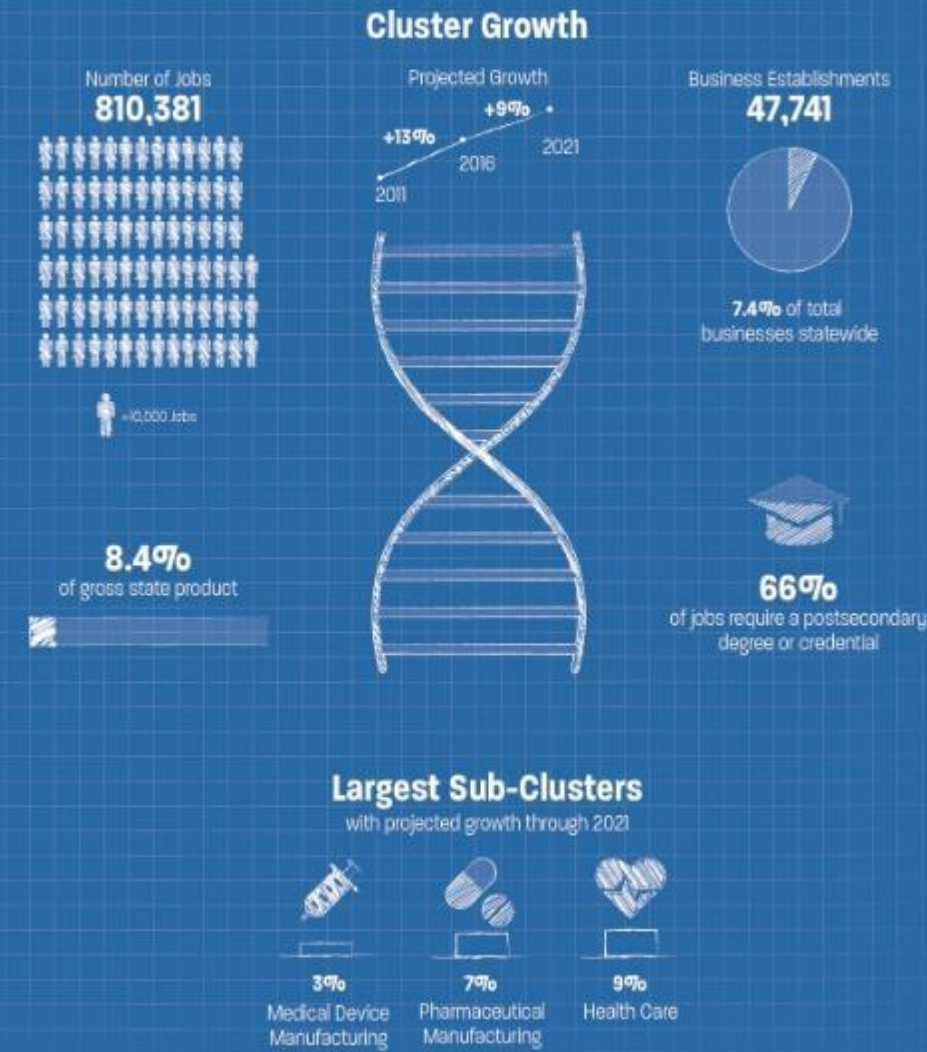
**FLORIDA
CHAMBER**
Foundation

SECURING FLORIDA'S FUTURE
flfoundation.org

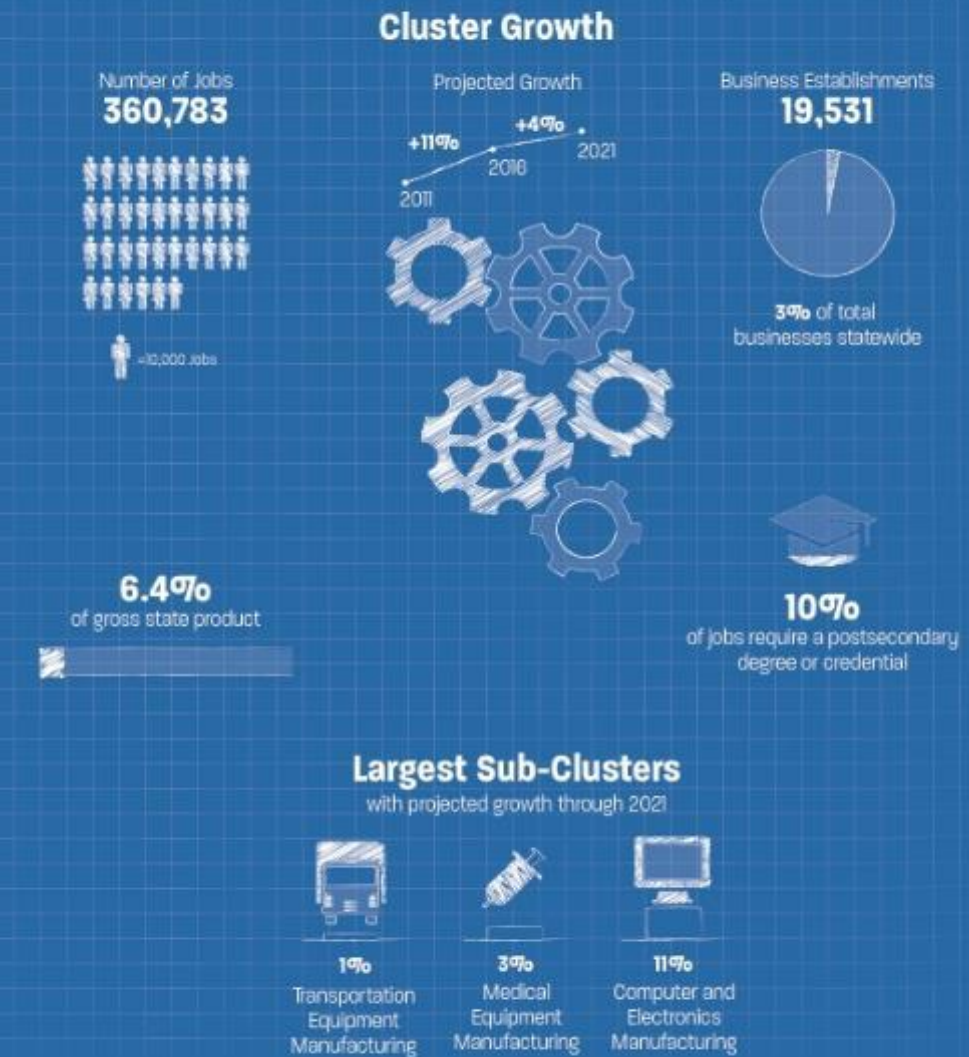
Aerospace & Aviation



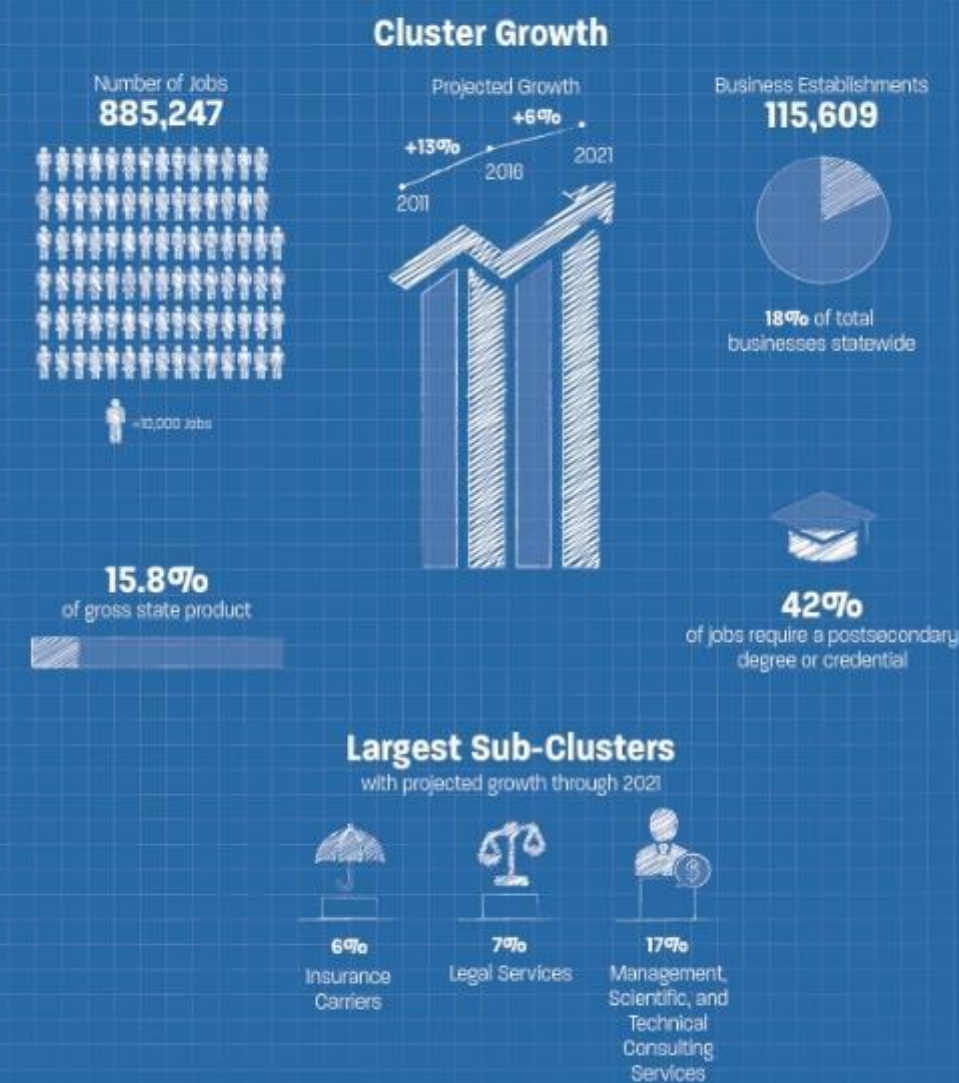
Health Care and Life Sciences



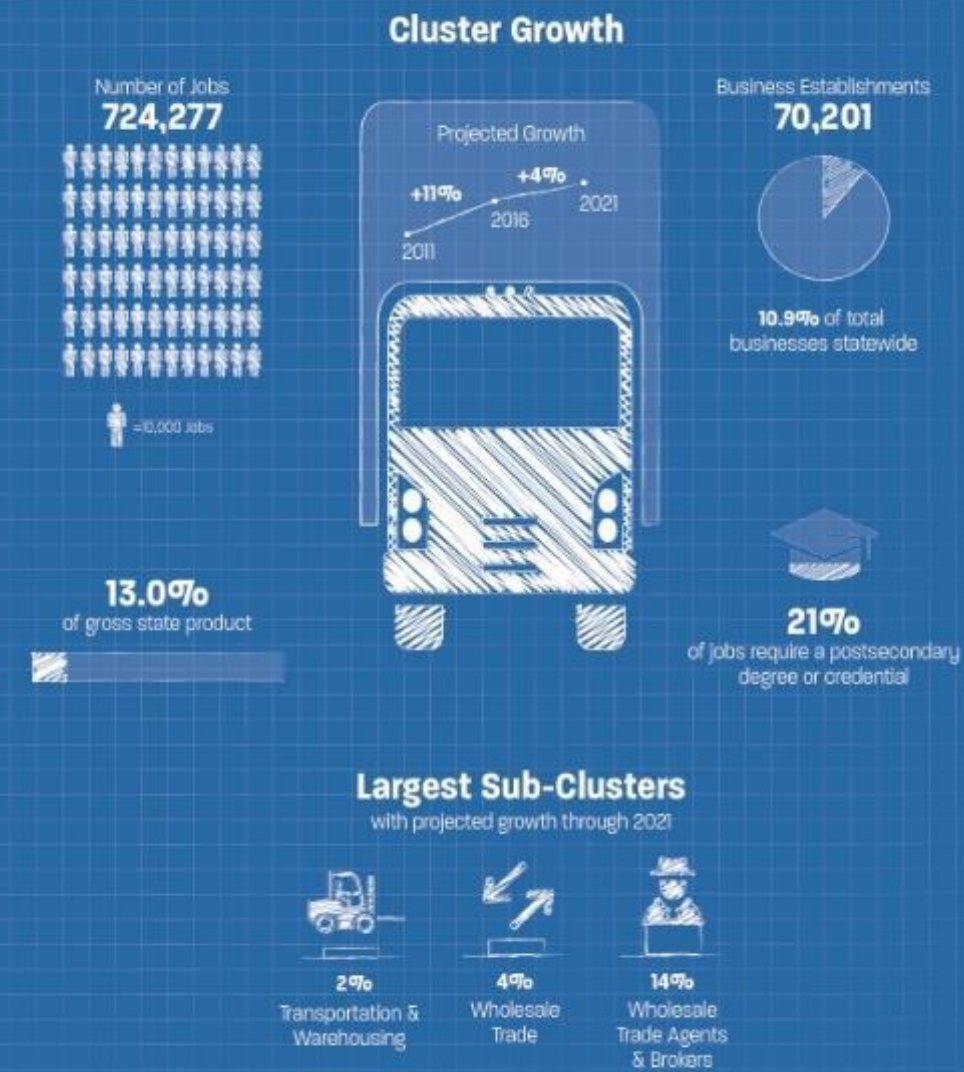
Manufacturing



Finance and Professional Services

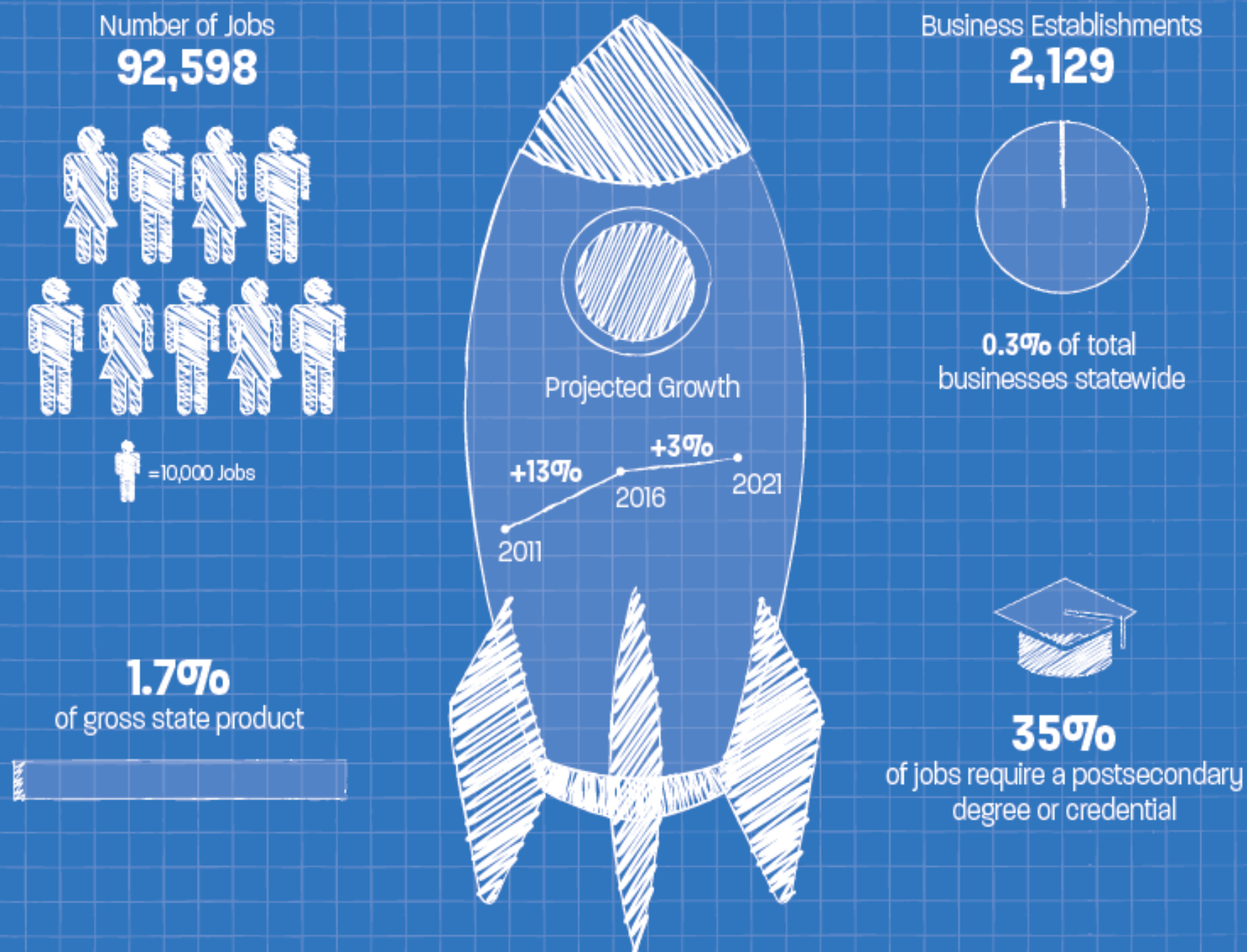


Logistics and Distribution



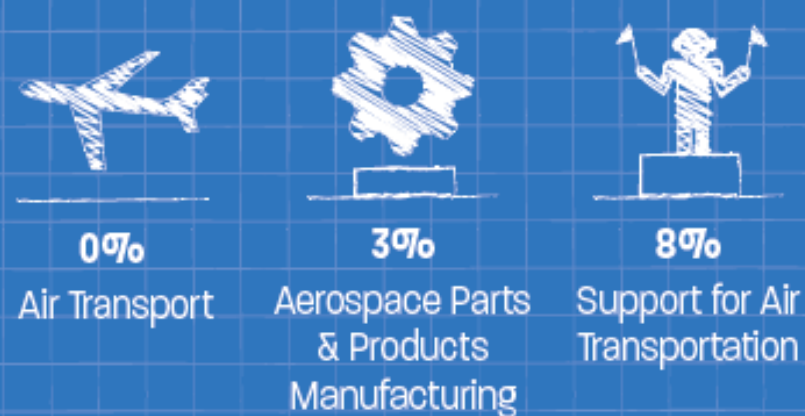
Aerospace & Aviation

Cluster Growth



Largest Sub-Clusters

with projected growth through 2021



Potential Career Pathways

Aerospace and Aviation

ENTRY-LEVEL

- Shipping and Receiving Materials Handler (High school diploma)
- Maintenance and Repair Worker (High school diploma)

MIDDLE-SKILL

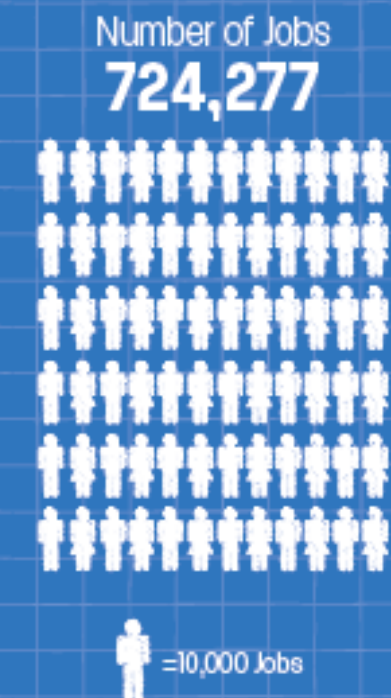
- Air Export Agent (High school diploma)
- Avionics Technician (Postsecondary credential)

HIGH-SKILL

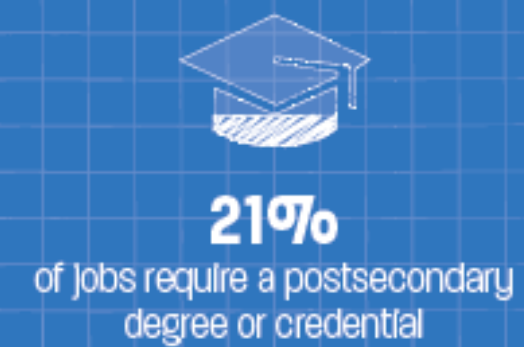
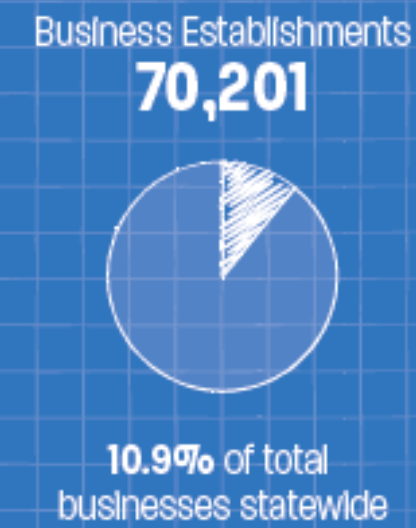
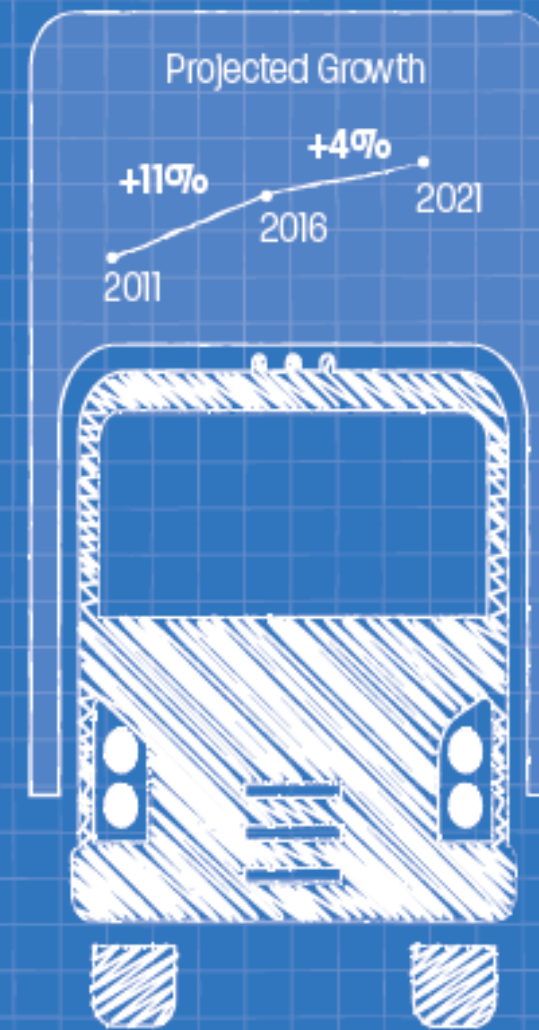
- Logistician (Bachelor's degree)
- Aircraft Maintenance/Installation Supervisor (Postsecondary certificate or associate's degree)

Logistics and Distribution

Cluster Growth



13.0%
of gross state product



Largest Sub-Clusters with projected growth through 2021



FLORIDA: MADE FOR TRADE

Florida Trade and Logistics Study 2.0



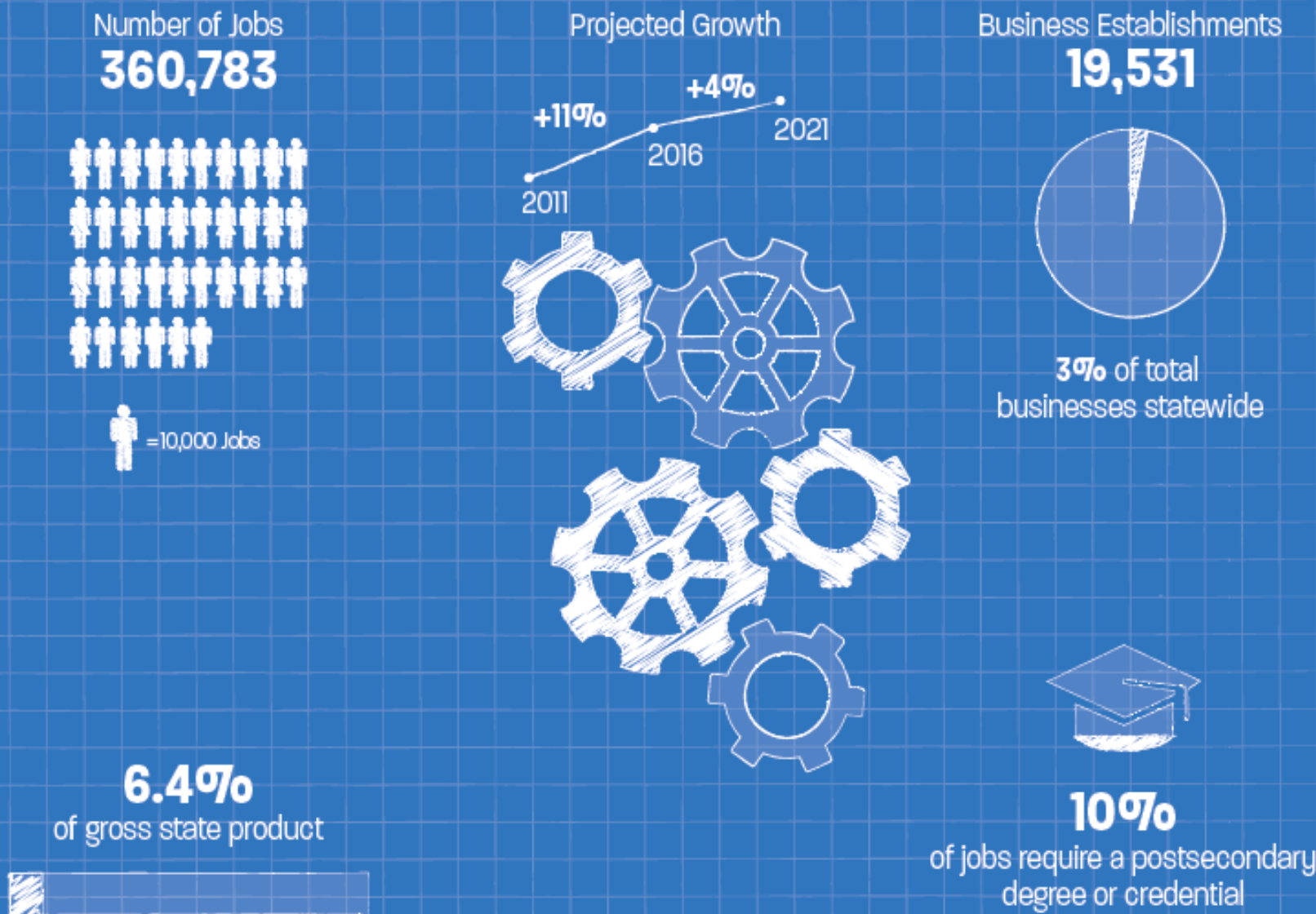
**Bank of America
Merrill Lynch**

Presenting Sponsor

**FLORIDA
CHAMBER**
Foundation
SECURING FLORIDA'S FUTURE
FloridaChamber.com

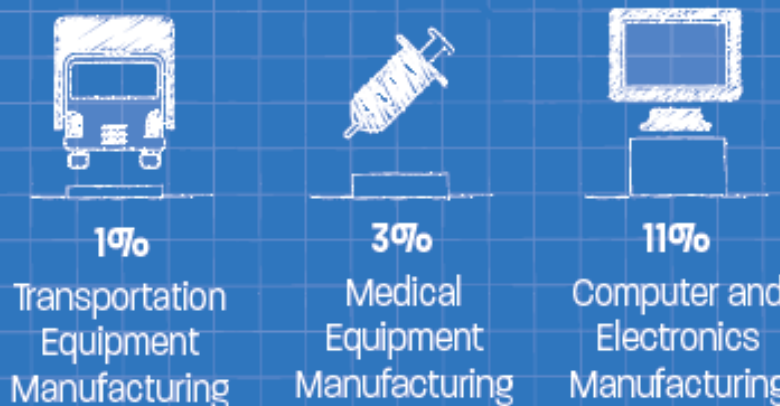
Manufacturing

Cluster Growth



Largest Sub-Clusters

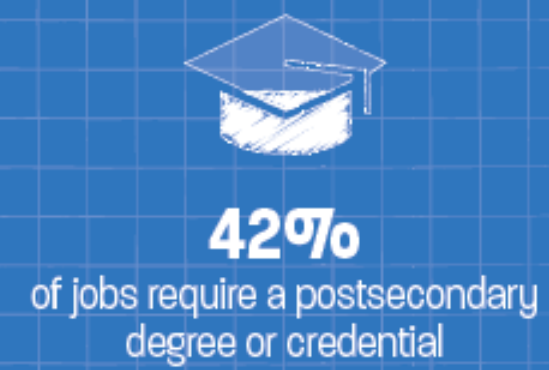
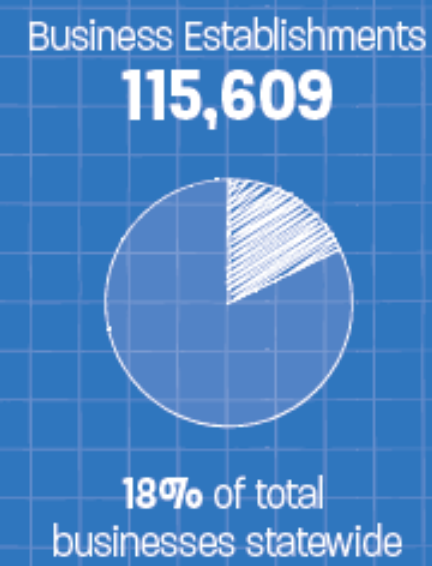
with projected growth through 2021



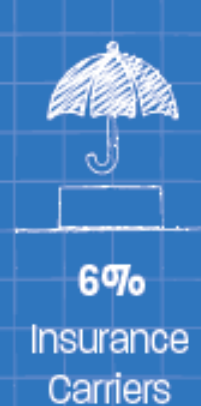
Job Description	Employed in 2016	2016-2021 % Change in Cluster	Median Wage	Typical Entry-Level Education
Machinists	6,671	6%	\$17.98	HS Diploma or Equivalent
Welders	7,266	1%	\$16.87	HS Diploma or Equivalent
Industrial Machinery Mechanics	5,140	3%	\$21.72	HS Diploma or Equivalent

Finance and Professional Services

Cluster Growth

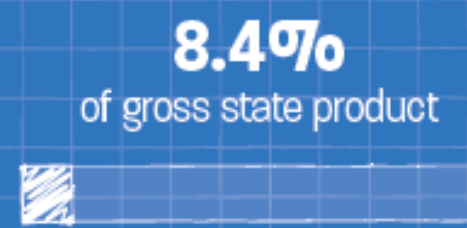
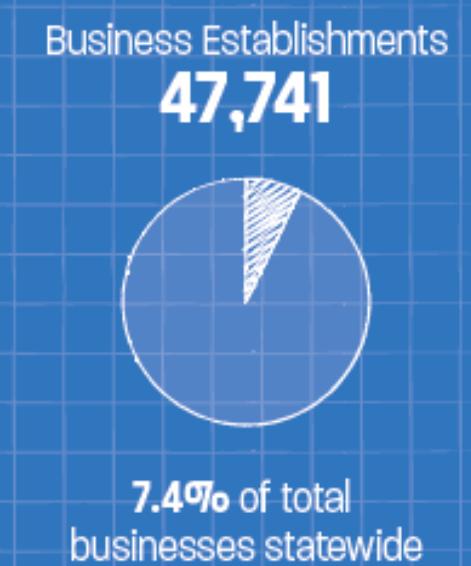
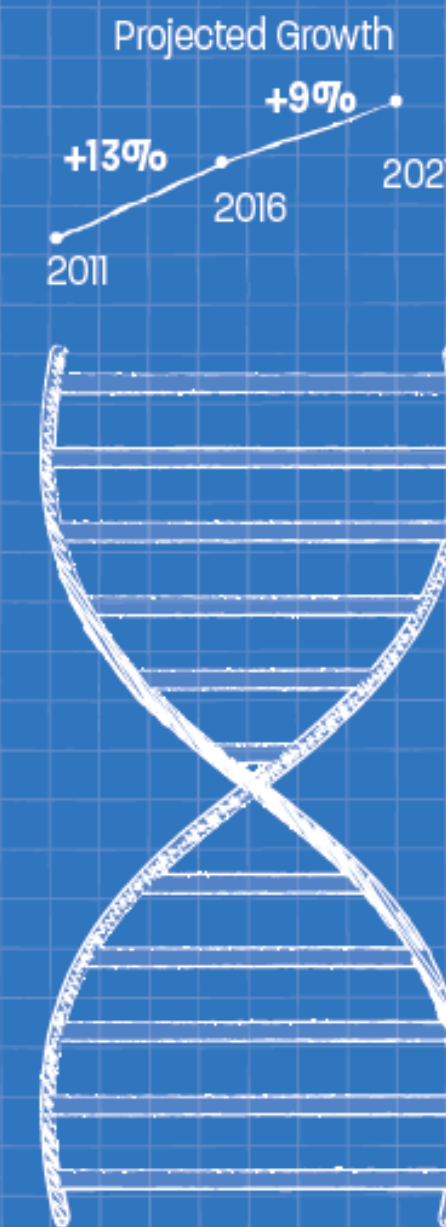
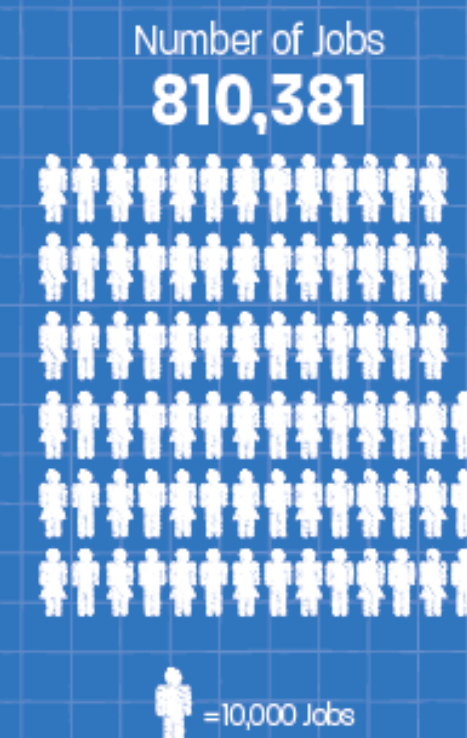


Largest Sub-Clusters with projected growth through 2021

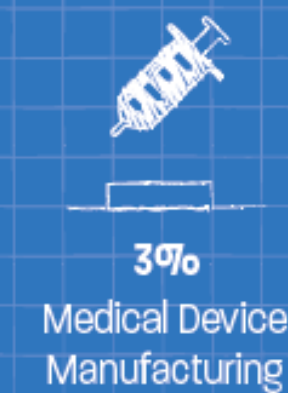


Health Care and Life Sciences

Cluster Growth



Largest Sub-Clusters with projected growth through 2021





www.Florida2030.org