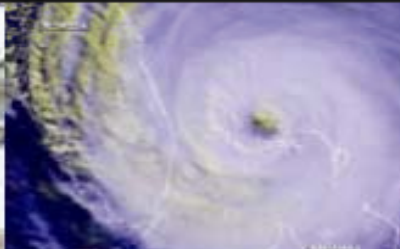




# Redistricting



**FLORIDA**  
**CHAMBER**  
*of Commerce*  
*Florida's Business Advocate*

# Agenda

- Redistricting/Reapportionment
- 2010 Census Data
- Demographic Shifts
- Census Data to Districts
- Redistricting & Florida Political Timeline
- Redistricting Standards
- Myths and Pitfalls of Amendments 5 & 6

*[www.FloridaChamber.com](http://www.FloridaChamber.com)*

# What is Reapportionment?

- Reallotment of U.S. Congressional seats according to changes in the census figures as required by the Constitution. Some states gain congressional seats while others lose seats. Electoral votes (based on Congressional representation) also shift.

# What is Redistricting?

- Redrawing of political boundary lines every 10 years to reflect changes in population so that each congressional district has an equal population and each legislative district has a nearly equal population.

*[www.FloridaChamber.com](http://www.FloridaChamber.com)*

**FLORIDA**  
**CHAMBER**  
*of Commerce*

# Census Day: April 1, 2010

- *U.S. Constitution, Art. I, Sec. 2*, establishes that apportionment of the House of Representatives based on a national census.
- First census in 1790.

*[www.FloridaChamber.com](http://www.FloridaChamber.com)*

**FLORIDA**  
**CHAMBER**  
of Commerce

# Growth not Uniform

- Different areas experience different rates of population growth.
- Areas that grow faster are entitled to more representation.
- Conversely, areas that grow slower lose representation.
- Everyone is supposed to be counted, even illegal aliens.

# Florida Census Population

- **USA: 308,745,538 (+9.7%)**
- **Florida: 18,801,310 (+17.6%)**

*[www.FloridaChamber.com](http://www.FloridaChamber.com)*

**FLORIDA**  
**CHAMBER**  
of Commerce

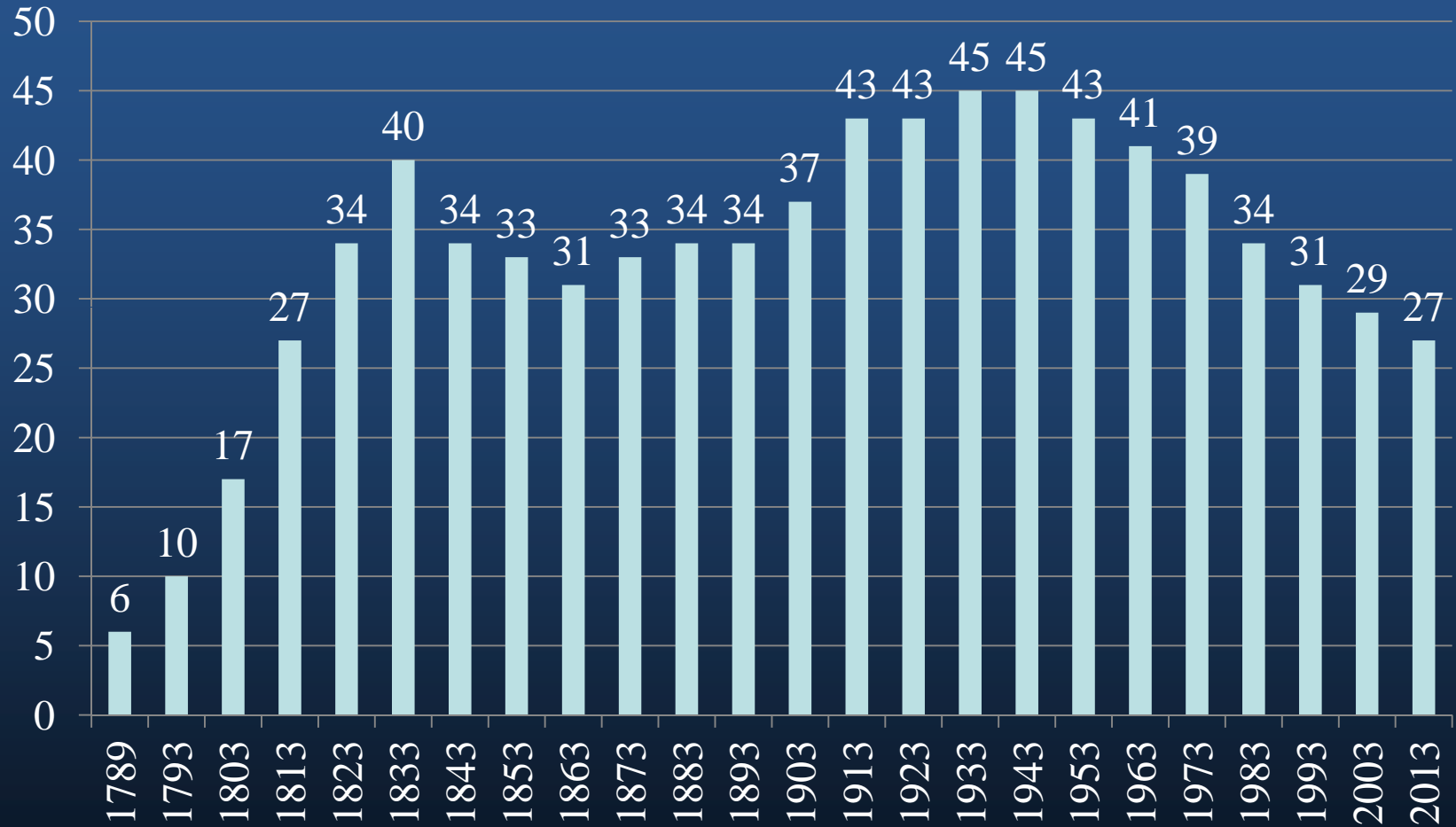
# Population Comparisons

	<u>2000</u>	<u>2010</u>	<u>Change</u>
• California	33,871,648	37,253,956	10.0%
• Texas	20,851,820	25,145,561	20.6%
• New York	18,976,457	19,378,102	2.1%
• Florida	15,982,378	18,801,310	17.6%
• Illinois	12,419,293	12,830,632	3.3%

*[www.FloridaChamber.com](http://www.FloridaChamber.com)*

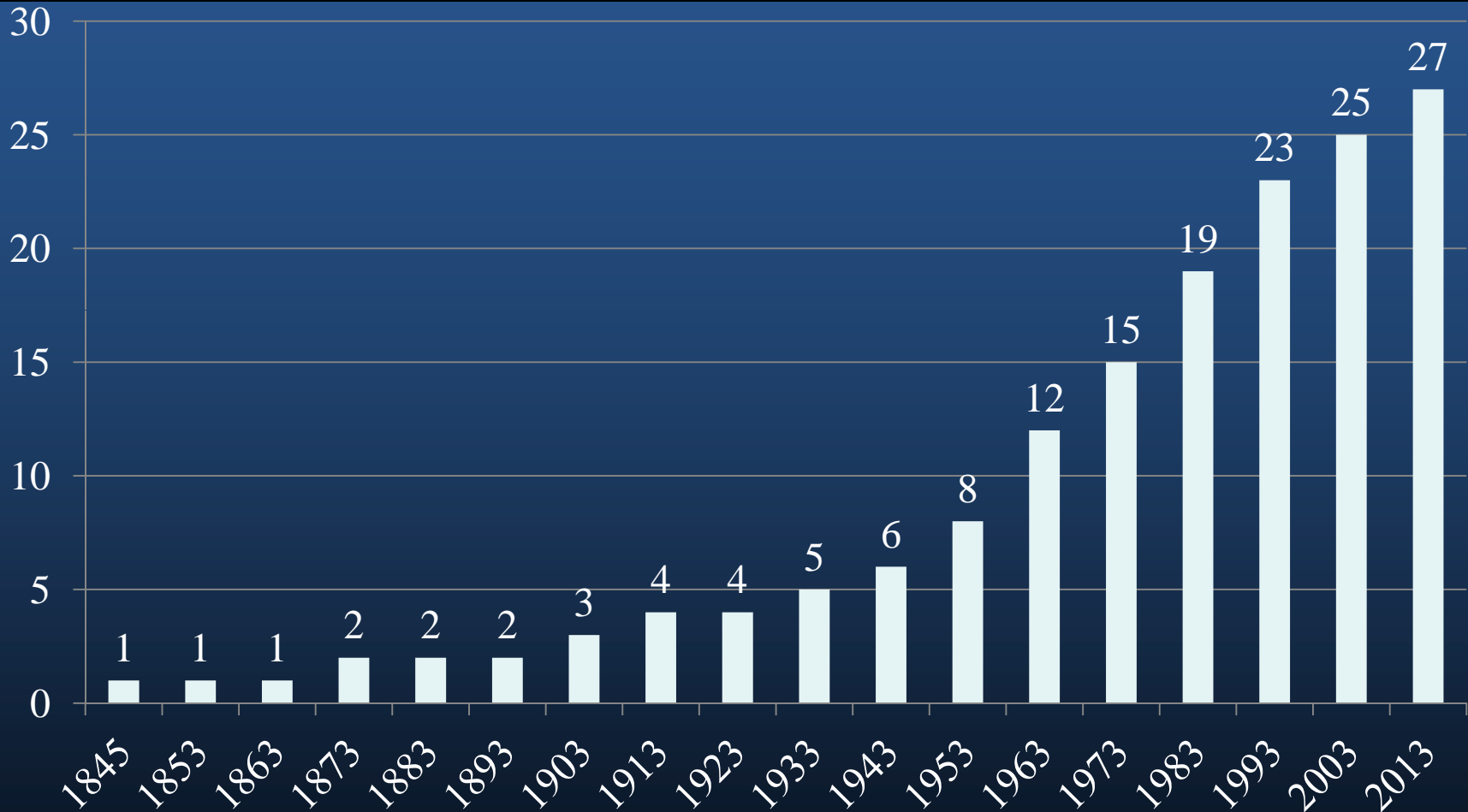
**FLORIDA**  
**CHAMBER**  
of Commerce

# New York Delegation in U.S. House of Representatives



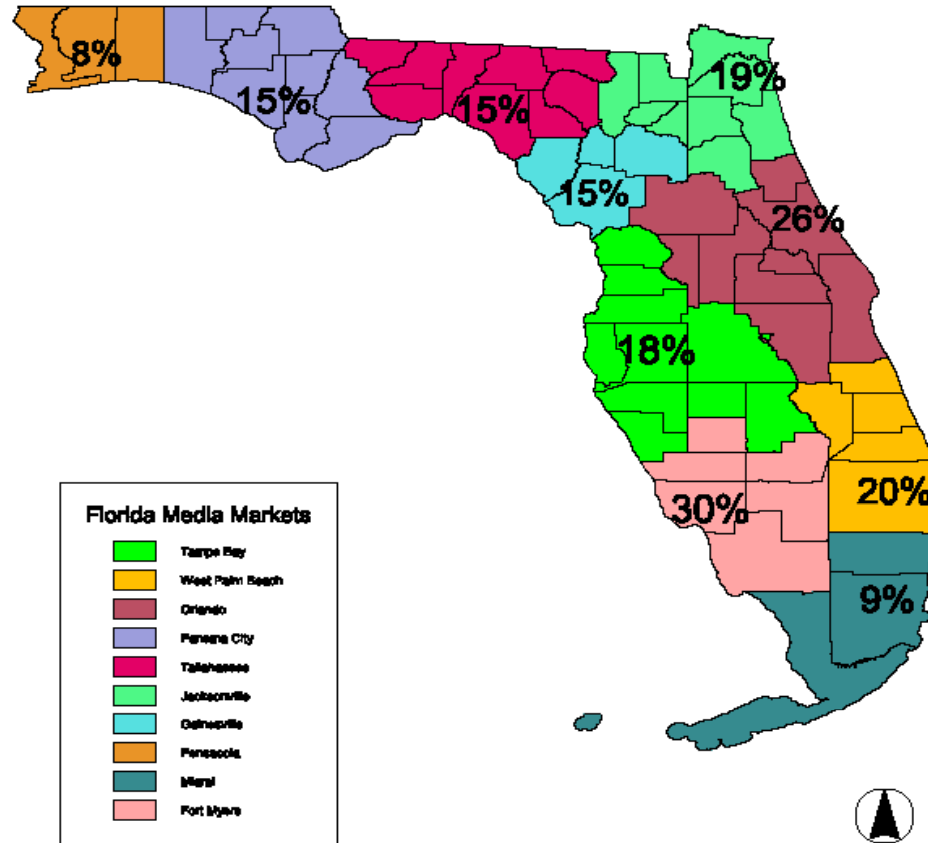
[www.FloridaChamber.com](http://www.FloridaChamber.com)

# Florida delegation in U.S. House of Representatives



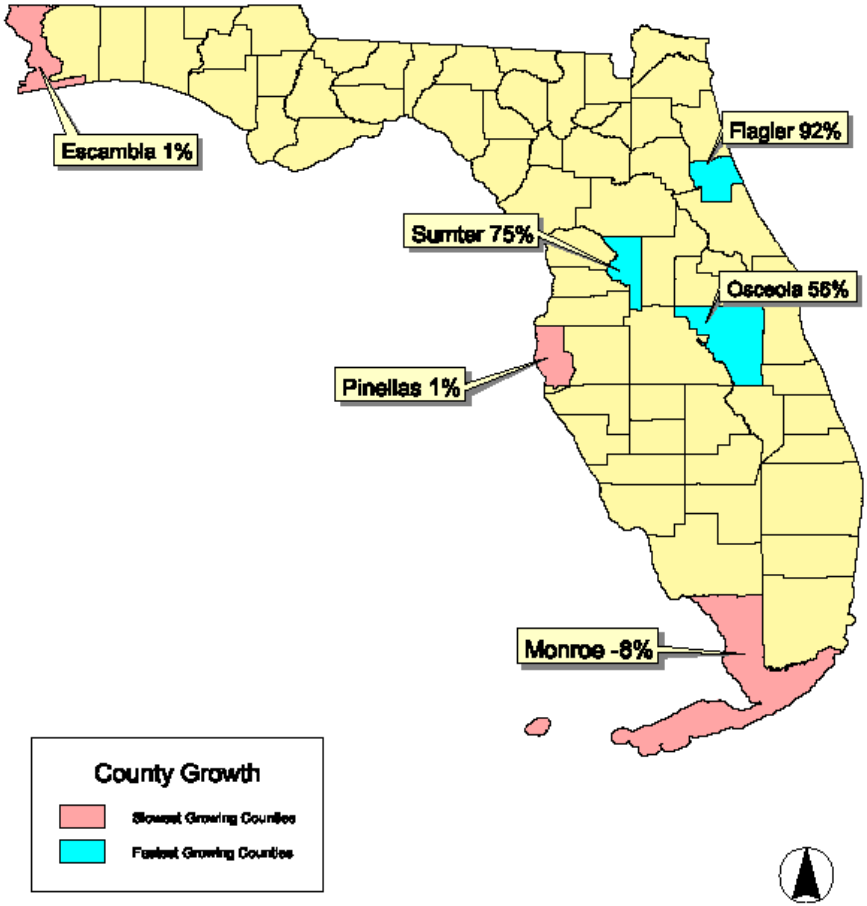
[www.FloridaChamber.com](http://www.FloridaChamber.com)

## FL Population Change By Media Market 18% Growth



[www.FloridaChamber.com](http://www.FloridaChamber.com)

# Fastest & Slowest Growing Counties 2000 - 2010

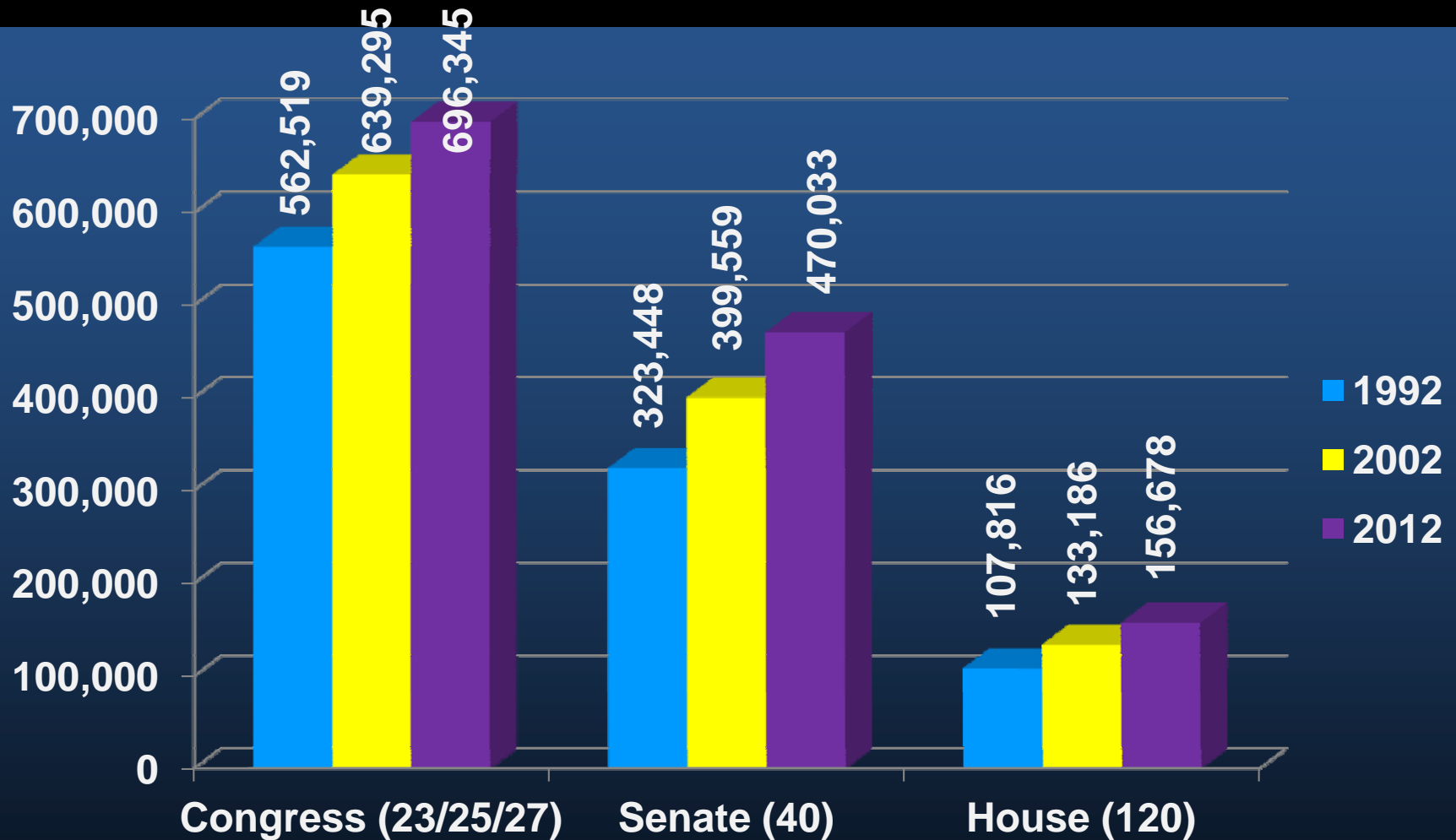


# Growth in Florida's Minority Populations



[www.FloridaChamber.com](http://www.FloridaChamber.com)

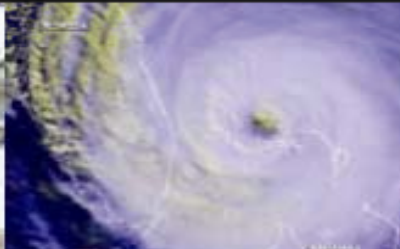
# Population per district in Florida...



[www.FloridaChamber.com](http://www.FloridaChamber.com)



# Redistricting and Florida Political Timeline



**FLORIDA**  
**CHAMBER**  
*of Commerce*  
*Florida's Business Advocate*

# Procedural Review & Timeline 2012

- **2012 Timeline**

- March 2010 - Census forms mailed
- April 2010 - Census Day
- November 2010 – Amendments 5/6 Passed
- December 2010 - President Obama Certified Apportionment
  
- January/February 2011 - Census Data Delivered
- March 2011 - Redistricting Data Received
- June 2011 - Final State of Florida software version ready
- Summer 2011 - Public hearings throughout Florida
- Fall 2011 – Interim Committee Meetings
  
- January 2012 – Session to Redistrict Florida
- Summer 2012 - Candidate Qualifying

*[www.FloridaChamber.com](http://www.FloridaChamber.com)*

**FLORIDA**  
**CHAMBER**  
of Commerce

# Summer & Fall 2011

- Public hearings during summer (26)
- Interim Committee meetings starting September 19, 2011.

## January 10, 2012

### Regular Session Convenes

The regular session in 2012 convenes 8 weeks earlier than normal (January 10, 2012; see, Ch. 2010-91, Laws of Florida).\*

January 14, 1992, and January 22, 2002

*[www.FloridaChamber.com](http://www.FloridaChamber.com)*

**FLORIDA**  
**CHAMBER**  
of Commerce

# Candidate Qualifying June 4-8, 2012

- Candidate qualifying occurs 10 weeks prior to the primary. Discussions about changing the date of the primary are ongoing, which may effect the date of candidate qualifying.

*[www.FloridaChamber.com](http://www.FloridaChamber.com)*

**FLORIDA**  
**CHAMBER**  
of Commerce

# Procedural Review & Timeline 2012

- Congressional Process
  - Congressional Map usually first in process
  - Adopted as a General Bill
  - Subject to review and veto by Governor
  - If Legislature fails to redistrict, Governor calls special session (limited to 20 days, no other topics)
  - Veto requires 2/3rds to override
  - U.S. Justice Department reviews 5 counties

*[www.FloridaChamber.com](http://www.FloridaChamber.com)*

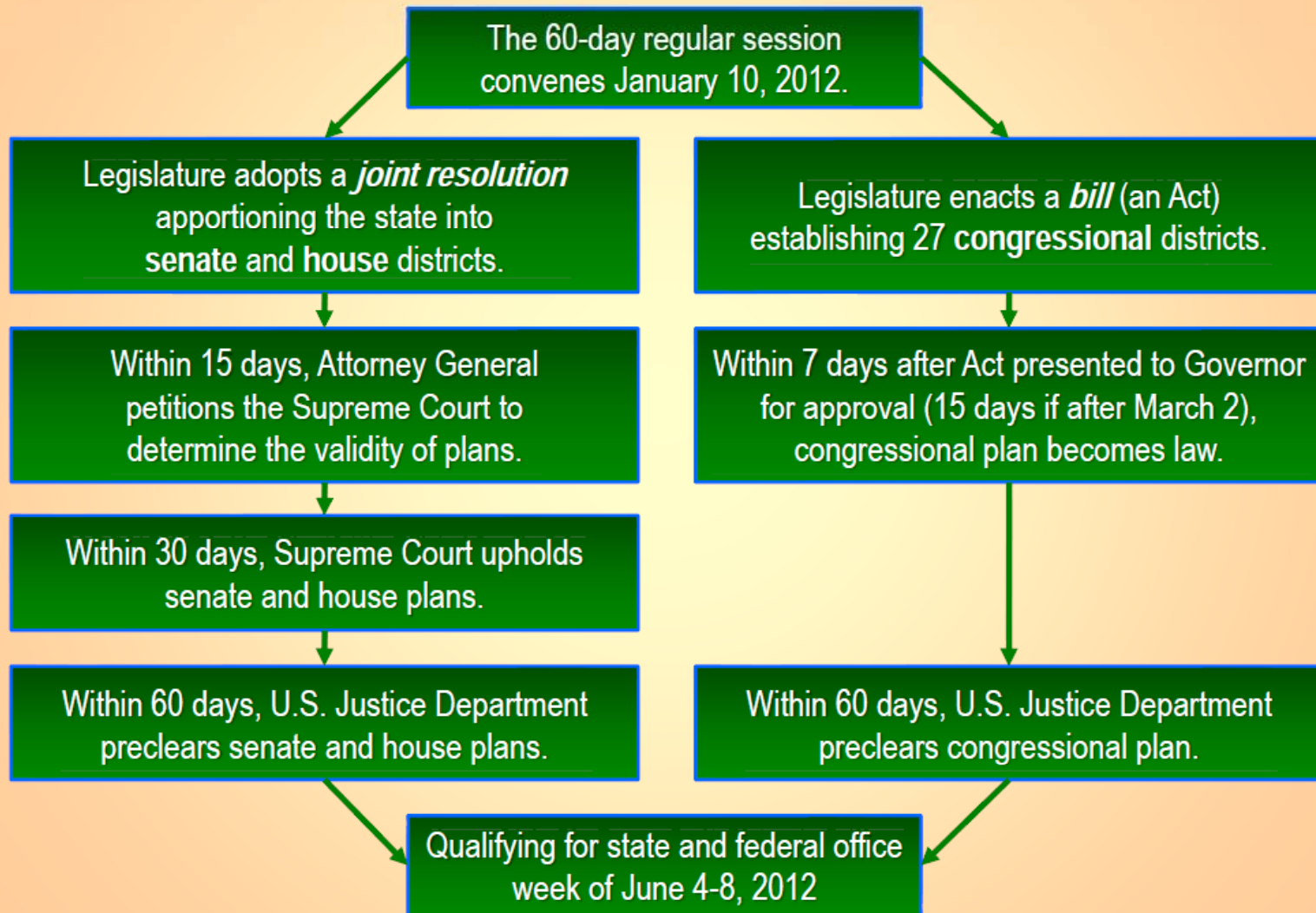
# Procedural Review & Timeline 2012

- Legislative Process
  - Adopted together as Joint Resolution
  - Must set number of districts Senate (30-40) and House (80-120)
  - If session fails, Governor calls 30 day session w/in 30 days
  - Mandatory duty of the legislature to adopt a Joint Resolution of Apportionment
  - After passage, within 15 days petition Supreme Court review, must render judgment in 30 days
  - If invalid, reconvenes legislature w/in 5 days for a 15 day session
  - If legislature fails, Supreme Court has 60 days to draw map
  - U.S. Justice Department review 5 counties

*[www.FloridaChamber.com](http://www.FloridaChamber.com)*

**FLORIDA**  
**CHAMBER**  
of Commerce

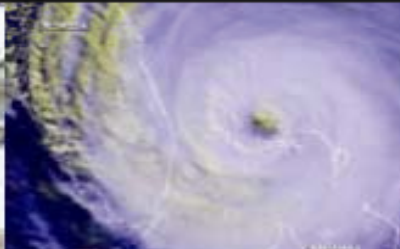
## Direct path to new districts for 2012 elections



Revised 5/19/2011



# Redistricting Standards



**FLORIDA**  
**CHAMBER**  
of Commerce

*Florida's Business Advocate*

# Old Redistricting Standards...

- One person, one vote (equal population).
- Voting Rights Act (§2,§5).
- Contiguous.
- Preservation of existing district cores
- Preservation of communities of interest
- ~~Incumbency protection~~
- ~~Political Gerrymandering~~

Old standards derived from the U.S. Constitution, federal court opinions, federal law & the Florida Constitution

*[www.FloridaChamber.com](http://www.FloridaChamber.com)*

**FLORIDA**  
**CHAMBER**  
of Commerce

# New Standards (Amendments 5 and 6)

## *Subsection (1)*

- Cannot favor an incumbent.
- Cannot disfavor an incumbent.
- Cannot favor a political party.
- Cannot disfavor a political party.
- Equal priority of the 4 standards above with voting rights for racial or language minorities.
- Contiguity.

## *Subsection (2)*

**Explicitly subordinate to subsection 1 or federal law**

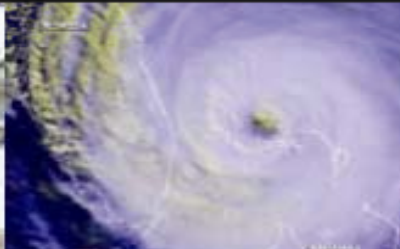
- As equal in population as “practicable.”
- Compact.
- Utilize existing political and geographic boundaries, where feasible.
- Equal priority among these 3 standards.\*

*[www.FloridaChamber.com](http://www.FloridaChamber.com)*

**FLORIDA**  
**CHAMBER**  
of Commerce



## Myths of Amendments 5 & 6



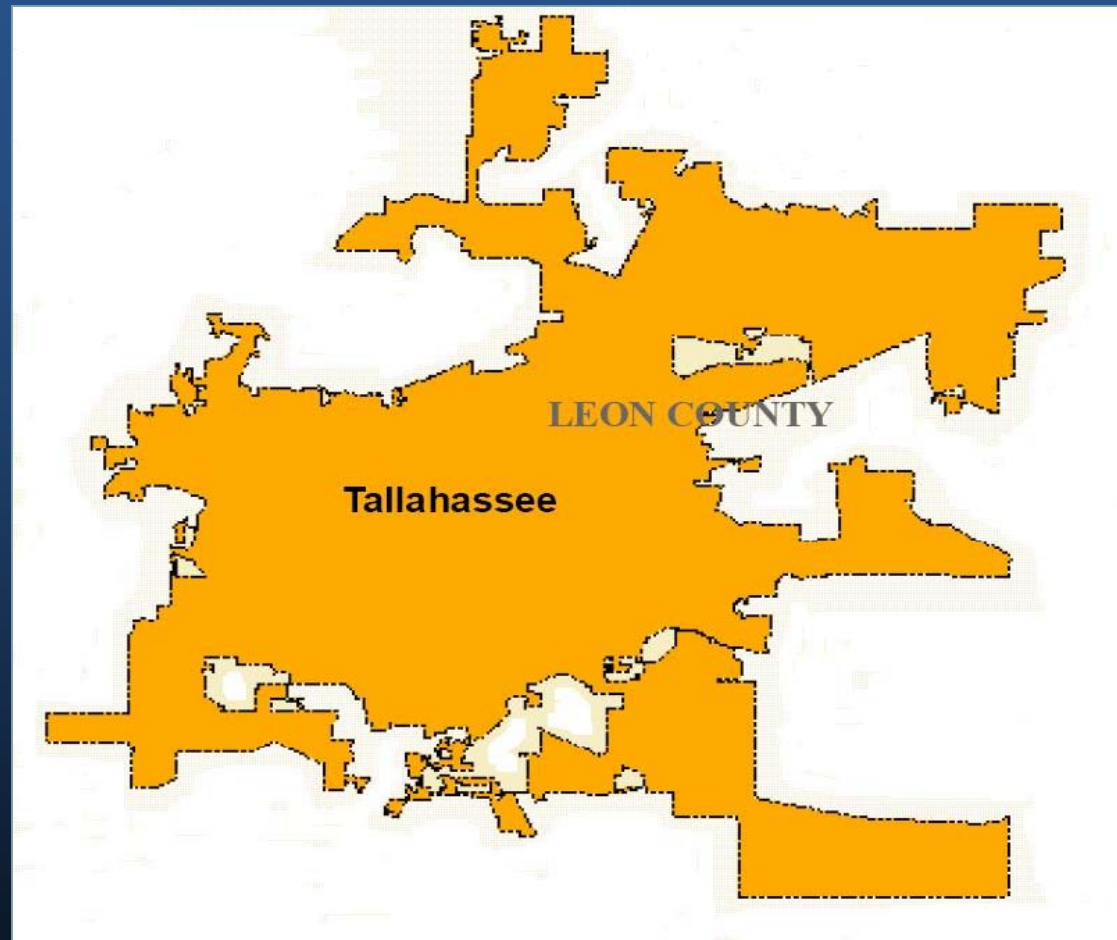
**FLORIDA**  
**CHAMBER**  
*of Commerce*  
*Florida's Business Advocate*

# Myth 1

## Districts will be compact little boxes.

- Recall, compactness is explicitly subordinate to federal law or subsection 1 of the amendment.
- Where feasible, districts should follow existing political boundaries (i.e. city boundaries).

# Tallahassee



*[www.FloridaChamber.com](http://www.FloridaChamber.com)*

**FLORIDA**  
**CHAMBER**  
of Commerce

## Myth 2

“Gerrymandering will be ended  
and minorities will be  
protected.”

*[www.FloridaChamber.com](http://www.FloridaChamber.com)*

**FLORIDA**  
**CHAMBER**  
of Commerce

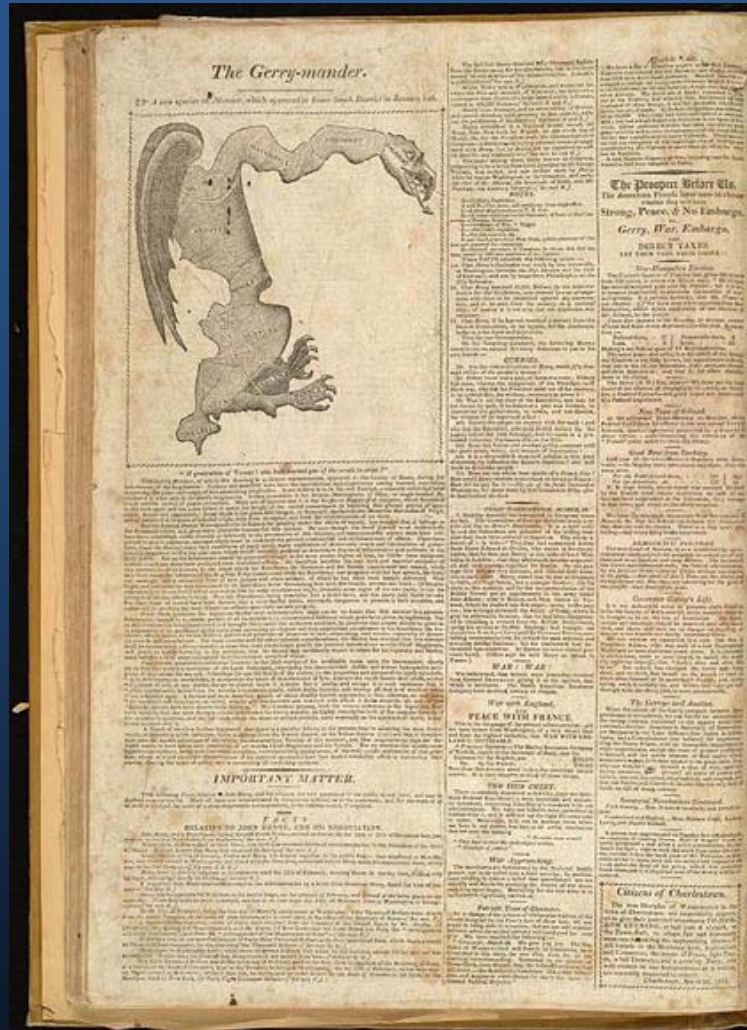
# Gerrymandering is...

- Gerrymandering is a practice that attempts to establish an advantage for a political party by manipulating geographic boundaries to give disproportionate power that party.

*[www.FloridaChamber.com](http://www.FloridaChamber.com)*

**FLORIDA**  
**CHAMBER**  
of Commerce

# The Original Gerrymander



[www.FloridaChamber.com](http://www.FloridaChamber.com)

**FLORIDA**  
**CHAMBER**  
of Commerce

# Racial Gerrymandering

- Gerrymandering may be required under federal law or may be used to achieve a desired electoral result for a racial or language minority.
- Explicit racial gerrymandering has been found unconstitutional, but states must strike a balance between illegal racial gerrymandering and illegal racial disenfranchisement.

# Hispanic Representation...

	Congress	Senate	House
Before 1982	0	0	0*
1982 Plans	0-1	0-3	3-7
1992 Plans	2	3	9-11
2002 Plans	3	3	11-15

\* First Cuban-American elected to House in January 1982.

[www.FloridaChamber.com](http://www.FloridaChamber.com)

**FLORIDA**  
**CHAMBER**  
of Commerce

# African-American Representation...

	Congress	Senate	House
Before 1982	0	0	5*
1982 Plans	0	2	10-12
1992 Plans	3	5	14-16
2002 Plans	3	7	17-20

\* First African-American since 1889 elected to House in 1968.

[www.FloridaChamber.com](http://www.FloridaChamber.com)

**FLORIDA**  
**CHAMBER**  
of Commerce

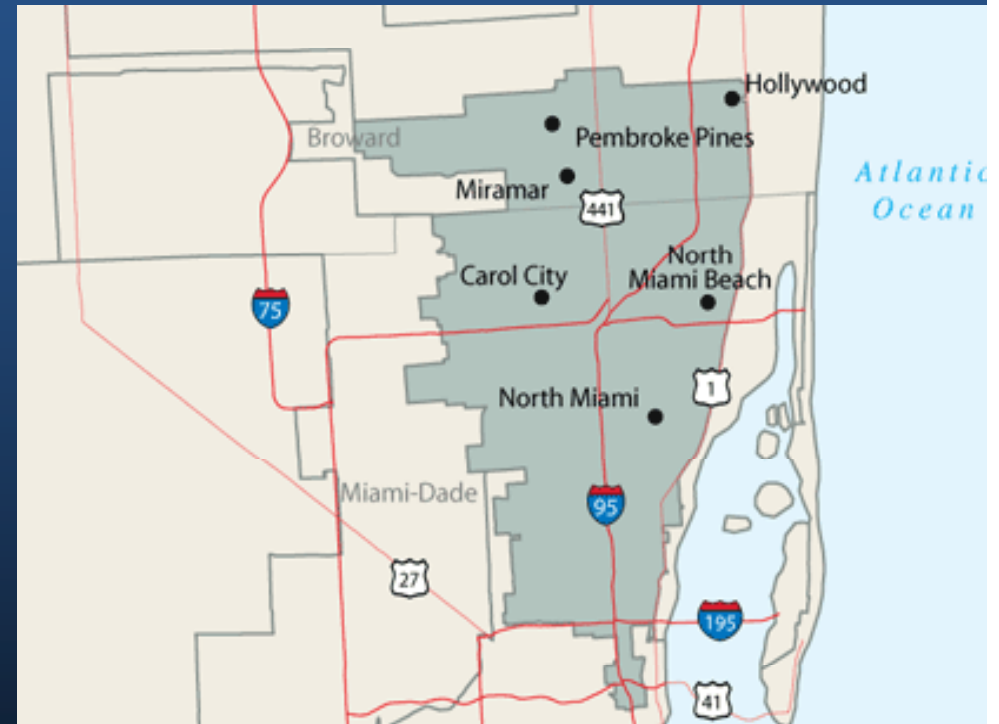
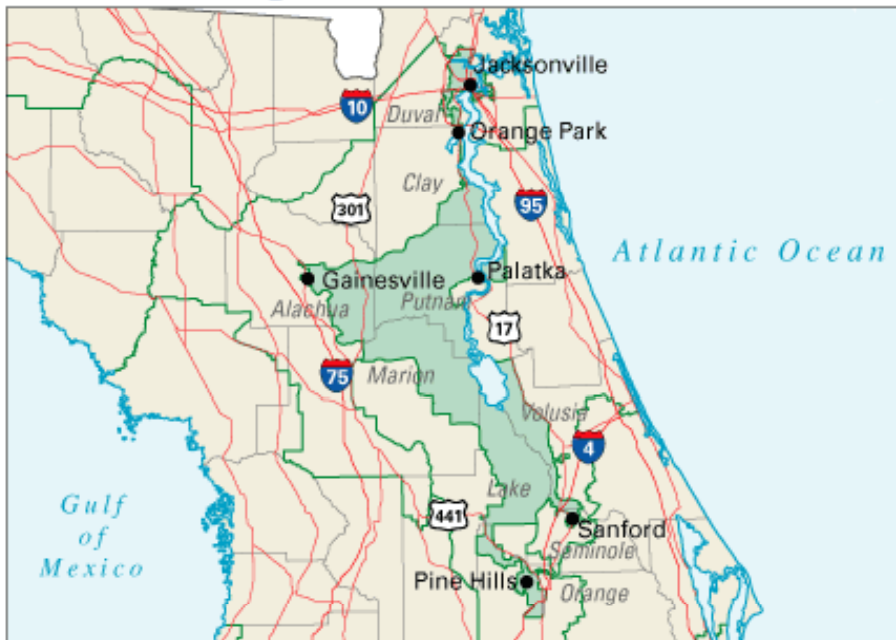
**CD 3**

**Black Majority  
Rep. Corrine Brown**

**CD 17**

**Black Majority  
Rep. Frederica S. Wilson**

*Congressional District 3*



*www.FloridaChamber.com*

**FLORIDA  
CHAMBER**  
of Commerce

# Myth 3 – Florida is a 50/50 State

Therefore there should be 50% Democrats and  
50% Republicans in Congress/State  
Legislature.

*[www.FloridaChamber.com](http://www.FloridaChamber.com)*

**FLORIDA**  
**CHAMBER**  
of Commerce

- The Democratic vote is overwhelmingly concentrated in just a few Florida counties.
- The Republican vote is more evenly spread across the majority of counties in Florida.
- Therefore, while statewide elections tend to be close, Republicans naturally tend to dominate district elections across the state with or without political gerrymandering.

*[www.FloridaChamber.com](http://www.FloridaChamber.com)*





# Impacts of 5 and 6

Rose Institute, Claremont McKenna College

*“If the Fair Districts initiative passes, it will leave control of redistricting in the Legislature’s hands but impose significant restrictions on how it can draw the lines. The degree of that control will almost certainly be the subject of multiple post-redistricting lawsuits.”*

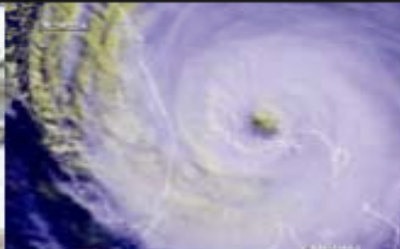
Particularly concerning minority district!

[www.FloridaChamber.com](http://www.FloridaChamber.com)





*For more information  
[mjohnson@flchamber.com](mailto:mjohnson@flchamber.com)*



**FLORIDA**  
**CHAMBER**  
of Commerce  
*Florida's Business Advocate*