

Energy Summit

Future of Florida Forum • September 19, 2011

Nuclear Generation

- Construction employment at peak – 3,500
- Affecting 35,500 jobs in US
- Permanent employment – 800
- Wages have multiplier effect of more than 25%
- Income taxes – more than \$50 million
- Ad valorem and property taxes – about \$35 million

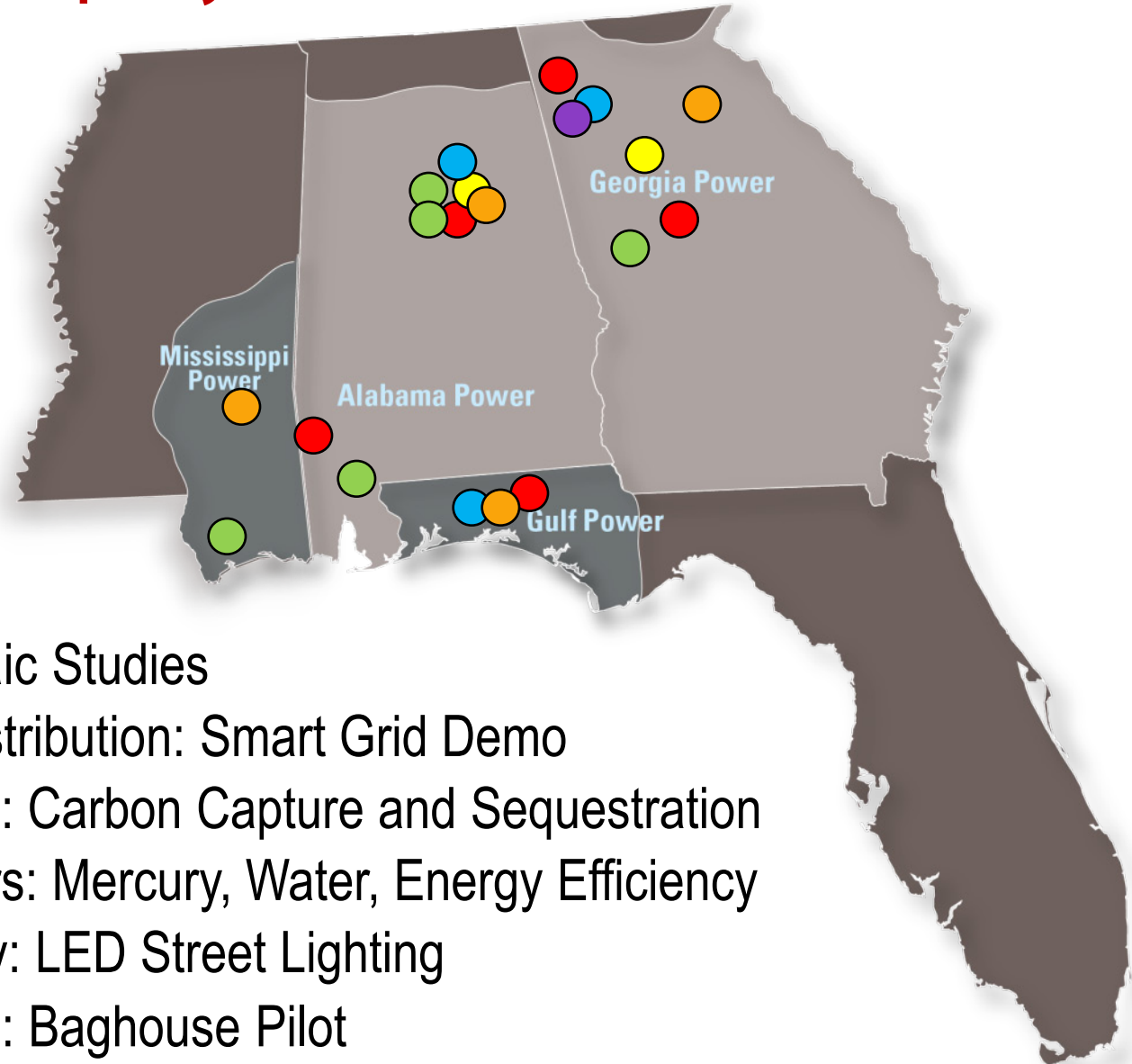


Kemper County IGCC



- Most advanced clean coal technology
- May 2014 In-Service Date
- 582 MW Capability
- CO₂ Capture for Enhanced Oil Recovery
 - - 65%, equivalent to NGCC
- Fuel - Mississippi Lignite
- \$2.4 billion project estimate
- 600 workers on site today
 - 2,000 peak construction
 - 300 permanent

Southern Company Research



- Solar: Photovoltaic Studies
- Transmission/Distribution: Smart Grid Demo
- Emission Control: Carbon Capture and Sequestration
- Research Centers: Mercury, Water, Energy Efficiency
- Energy Efficiency: LED Street Lighting
- Emission Control: Baghouse Pilot

Electric Transportation Strategy

Our role is to **drive, shape and grow electric transportation** in non-road and on-road segments. We are an enabler!



Automotive

Airports



Mines

Seaports



Rail yards



Warehouses



Truck stops

Conclusion

Southern Company is a world leader in advanced energy technology through research & development and moving those products to market.