



| Uniting Business for Good

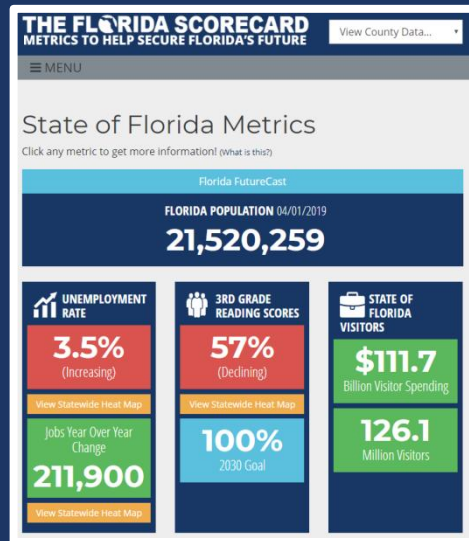
Florida's Changing Economic, Demographic & Political Landscape and Why Business Matters

www.FloridaChamber.com/PalmBeach

Uniting Business For Good



Solutions (Research)



Actions (Lobbying & Grassroots)



Leadership (Elections)





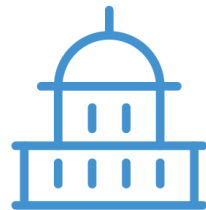
1 PLAN
3 GOALS
6 PILLARS

for Florida 2030



1 STEERING COMMITTEE
6 ADVISORY COMMITTEES
155+ PARTNERS & LEADERS

weighing in on Florida's future



10,000+ FLORIDIANS
engaged through
83 TOWN HALLS
covering all
67 COUNTIES

Coordinates



Help secure Florida's future at
Florida2030.org

Track Florida's progress at
TheFloridaScorecard.org

Improving Florida's talent pipeline for a better workforce

>**80%** of Florida's workforce has essential **employability skills**

>**60%** of Floridians 25-64 have a high-value **postsecondary certificate, degree, or training experience**

95% of entering **high school students graduate within 4 years**

100% of Florida **8th graders read & perform math at or above grade level**

100% of Florida **3rd graders read at or above grade level**

100% of children are **ready for kindergarten**

Creating good jobs by diversifying Florida's economy

Top state for **gross domestic product** and **top quartile most diversified state economy**

#1 state for **overseas visitors**

Goods exports **double** and **services** exports **triple**

Top 5 state for **manufacturing jobs**

Top 3 state for **technology jobs**

#1 state for **business startups**

Top 3 state for **venture capital investments**

Top 3 state for **research and development funding** and **patents issued**

Rural county share of Florida gross domestic product **doubles**

Preparing Florida's infrastructure for smart growth and development

Diverse, attainable housing to meet future demand

Every resident has access to **public and private mobility services**

All major population and economic centers connected to regional, national, and global markets by **high-capacity corridors**

World's **most capable spaceport; top-tier airports, seaports, and surface transportation hubs** in U.S.

100% of Florida residents have access to **high-speed communications connectivity**

Diverse and reliable energy, water, and waste management resources to meet future demand

All Florida residents protected by **resiliency plans**

Building the perfect climate for business

Actuarially sound **property insurance** rates based on **actual risk and competition**

#1 business tax climate in the nation

Regulatory, labor, and operating risk environments rated among **top 5** in the nation

Environmental permitting and local land use processes rated among **top quartile in the nation**

Occupational licensing laws rated among **top 5 in the nation**

Legal climate improves to **top quartile in the nation**

Making government and civics more efficient and effective

100% of **state agencies** aligned with Florida 2030 goals

100% of **regional economic development plans** aligned with Florida 2030 goals

100% of Florida residents covered by **regional visioning processes**

Increased size and impact of **nonprofit and philanthropic sectors**

Doubling the rate of Floridians who **volunteer and participate in civic and public service**, moving us from the bottom to the **top quartile**

Championing Florida's quality of life

Top 5 state for **overall well being**
Florida's brand and reputation as **best place to live, work, raise a family, visit, learn, play, relocate, and compete** remains **top in the nation**

<**10%** of Florida children **live in poverty** and **100%** have a **pathway out**

< **10%** of Florida residents live in **housing-cost burdened households**

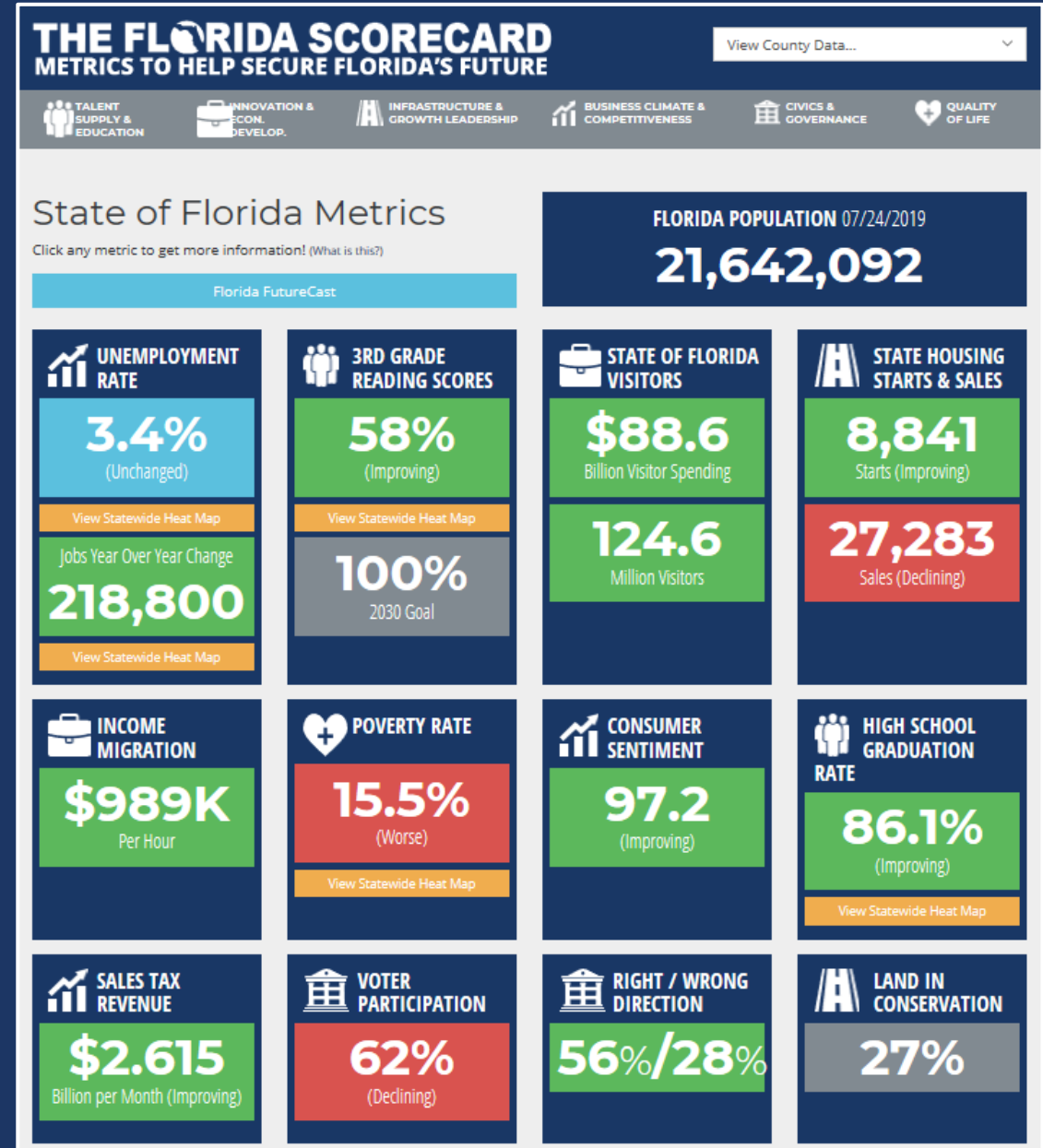
Crime rates rank among the **lowest 10 states**

Florida **protects and enhances** the value of its **arts, culture, heritage, and sense of place**

Florida At A Glance

- Florida's Economy \$1 Trillion GDP (17th)
- 21.6 Million Residents
 - 3rd / 26M By 2030 / Around 900 per Day
- 124.6 Million Visitors In 2018
- Florida Creates 1 Out Of Every 13 New U.S. Jobs
- 289,700 Jobs Looking for People. 349,000 People Looking for Jobs

www.TheFloridaScorecard.org



THE FLORIDA SCORECARD

METRICS TO HELP SECURE FLORIDA'S FUTURE

View County Data...



TALENT SUPPLY
& EDUCATION



INNOVATION &
ECON. DEVELOP.



INFRASTRUCTURE &
GROWTH LEADERSHIP



BUSINESS CLIMATE &
COMPETITIVENESS



CIVICS &
GOVERNANCE



QUALITY
OF LIFE

Palm Beach County Metrics (What is this?)

Florida FutureCast

Click any metric to get more information!



UNEMPLOYMENT
RATE

3.6%

(Increasing)

Jobs Year Over Year Change

12,061

[View Statewide Heat Map](#)



HOUSING
PERMITS

2,622

Permits (Improving)



SALES TAX
REVENUE

\$103.77

Million per Year (Improving)



WEALTH
MIGRATION

\$1,101.11

Million per Year



POVERTY RATE

13.4%

(Worse)

[View Statewide Heat Map](#)



HIGH SCHOOL
GRADUATION RATE

87.2%

(Improving)

[View Statewide Heat Map](#)



LAND IN
CONSERVATION

37%



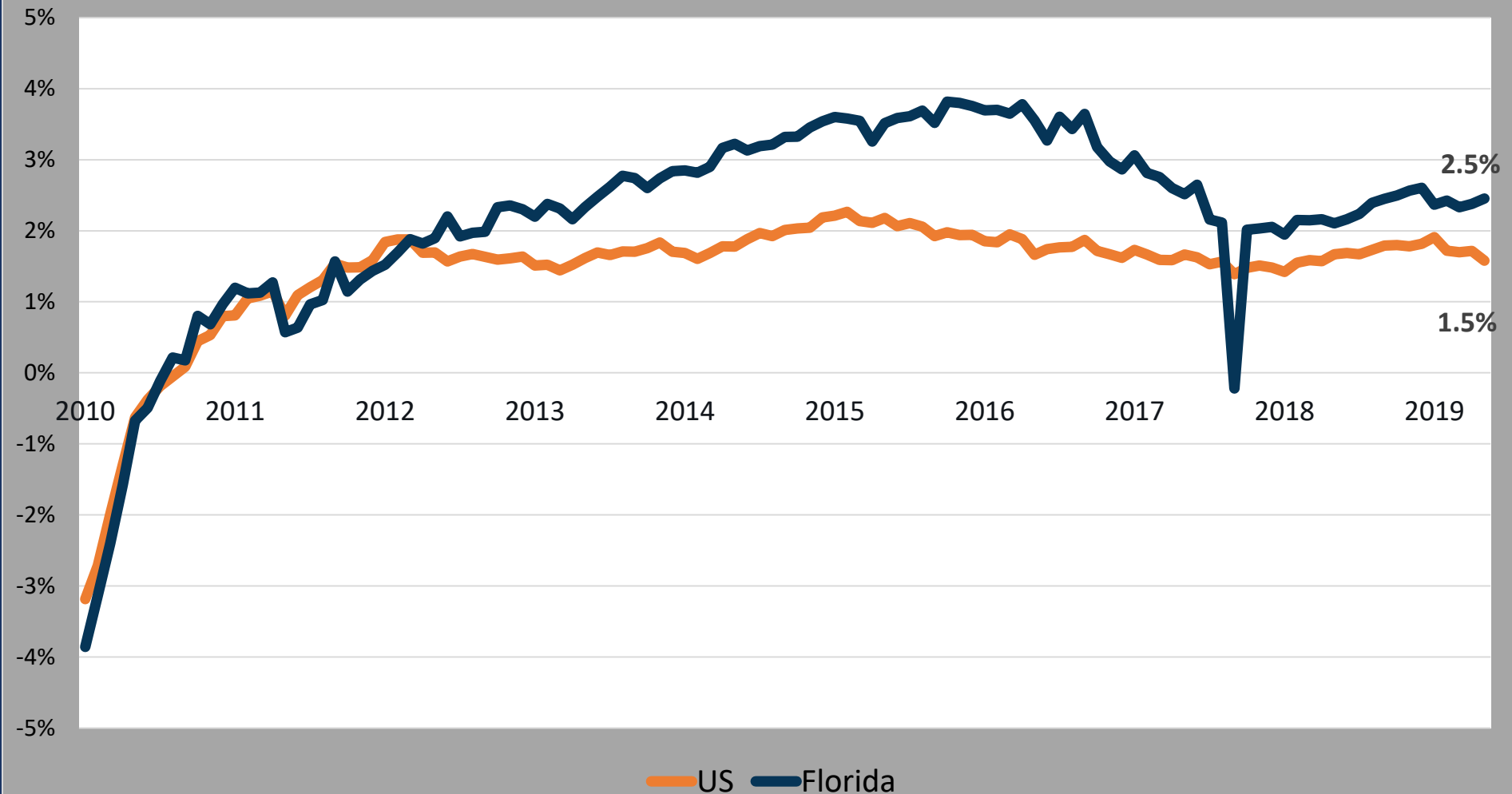
POPULATION

1.47

Million

[View Statewide Heat Map](#)

Florida and U.S. Job Growth Rates



Job Creation June 2018 – June 2019

U.S. Growth Rate 1.5%

Florida Growth Rate 2.5%

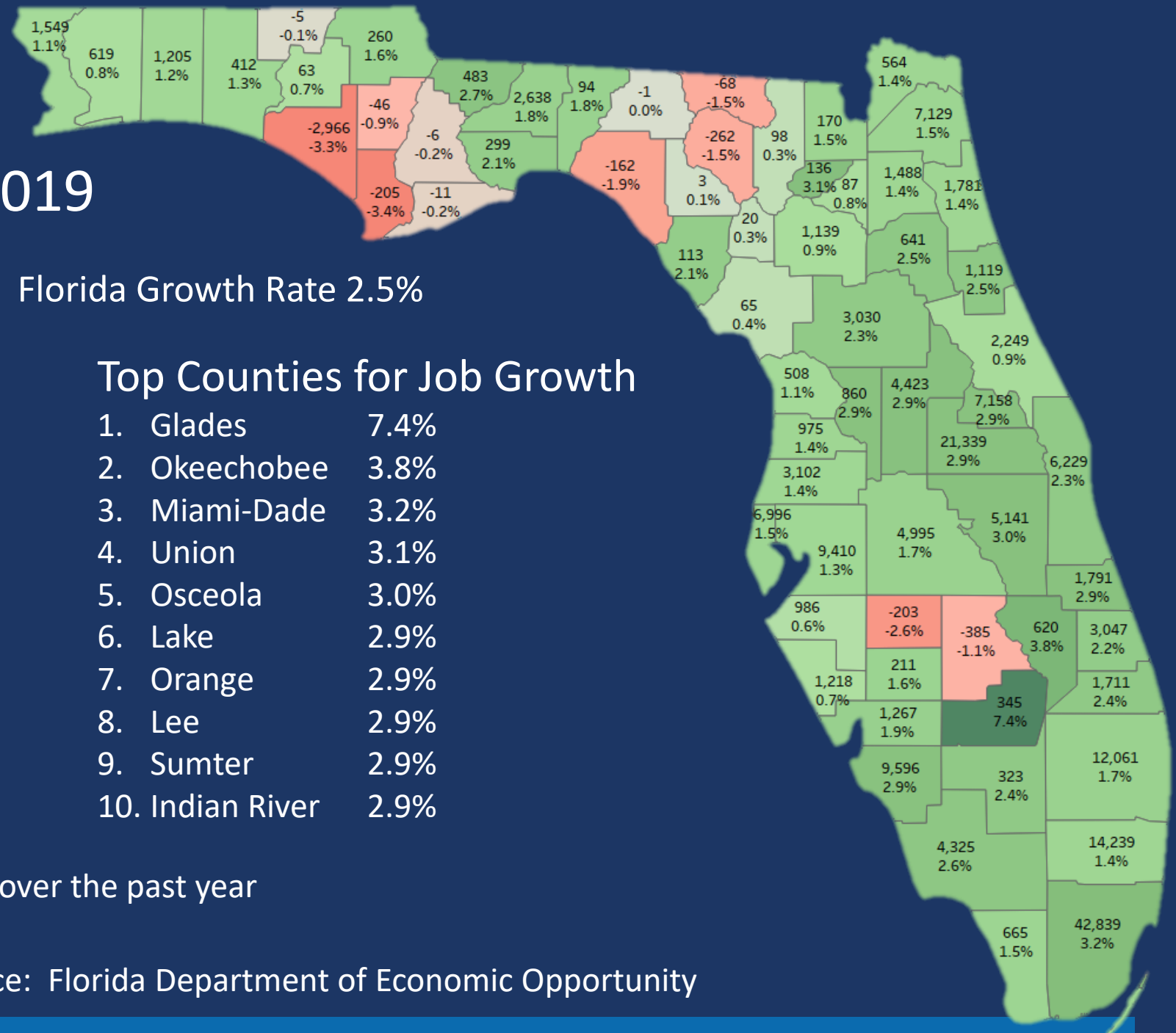
Top Counties for Jobs

1. Miami-Dade	42,839
2. Orange	21,339
3. Broward	14,239
4. Palm Beach	12,061
5. Lee	9,596
6. Hillsborough	9,410
7. Seminole	7,158
8. Duval	7,129
9. Pinellas	6,996
10. Brevard	6,229

Top Counties for Job Growth

1. Glades	7.4%
2. Okeechobee	3.8%
3. Miami-Dade	3.2%
4. Union	3.1%
5. Osceola	3.0%
6. Lake	2.9%
7. Orange	2.9%
8. Lee	2.9%
9. Sumter	2.9%
10. Indian River	2.9%

12 Florida counties lost jobs over the past year



Florida



INDUSTRY
DIVERSIFICATION

18th

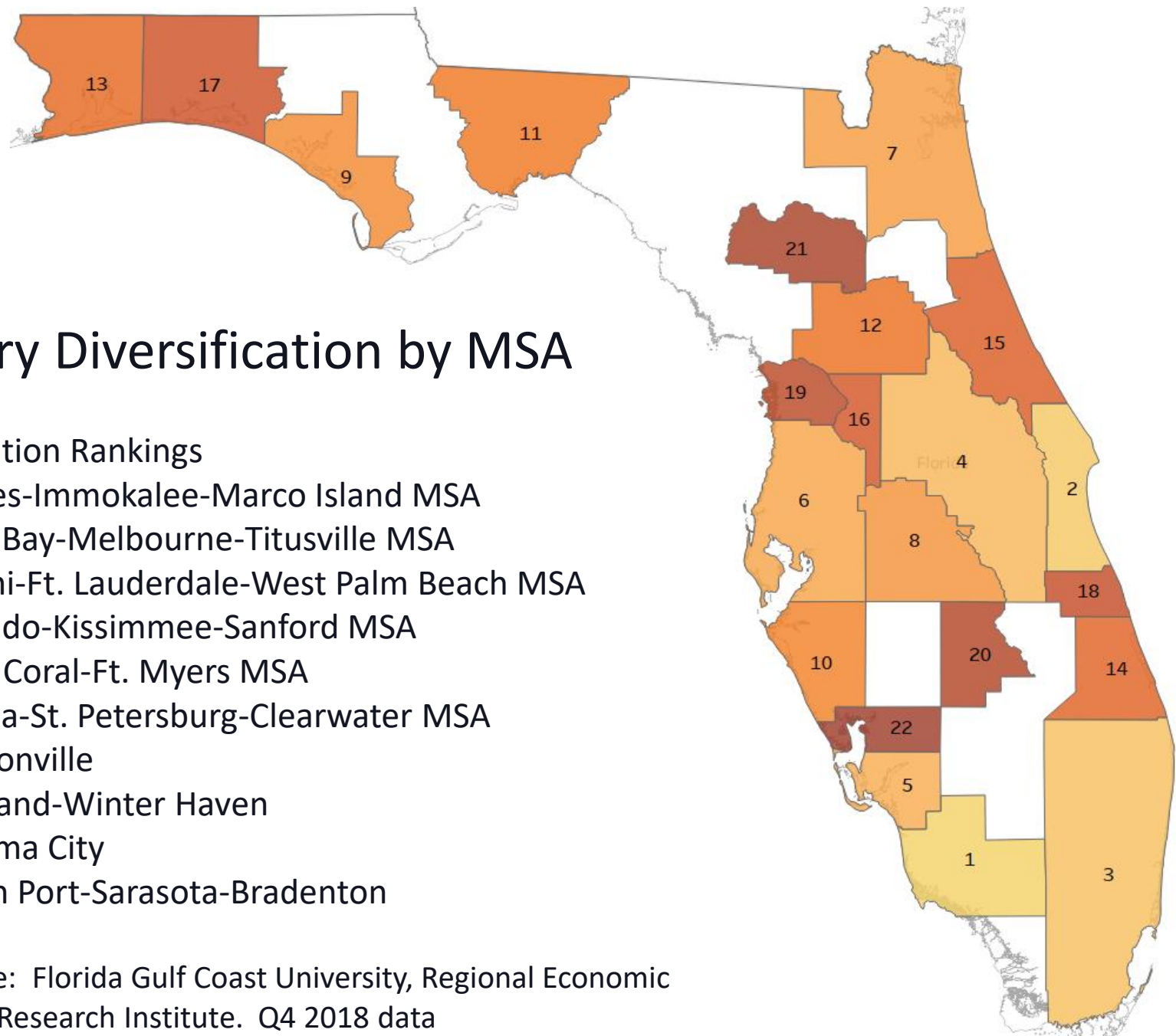
(Improving)

Industry Diversification by MSA

Diversification Rankings

- #1 Naples-Immokalee-Marco Island MSA
- #2 Palm Bay-Melbourne-Titusville MSA
- #3 Miami-Ft. Lauderdale-West Palm Beach MSA
- #4 Orlando-Kissimmee-Sanford MSA
- #5 Cape Coral-Ft. Myers MSA
- #6 Tampa-St. Petersburg-Clearwater MSA
- #7 Jacksonville
- #8 Lakeland-Winter Haven
- #9 Panama City
- #10 North Port-Sarasota-Bradenton

Data Source: Florida Gulf Coast University, Regional Economic
Research Institute. Q4 2018 data

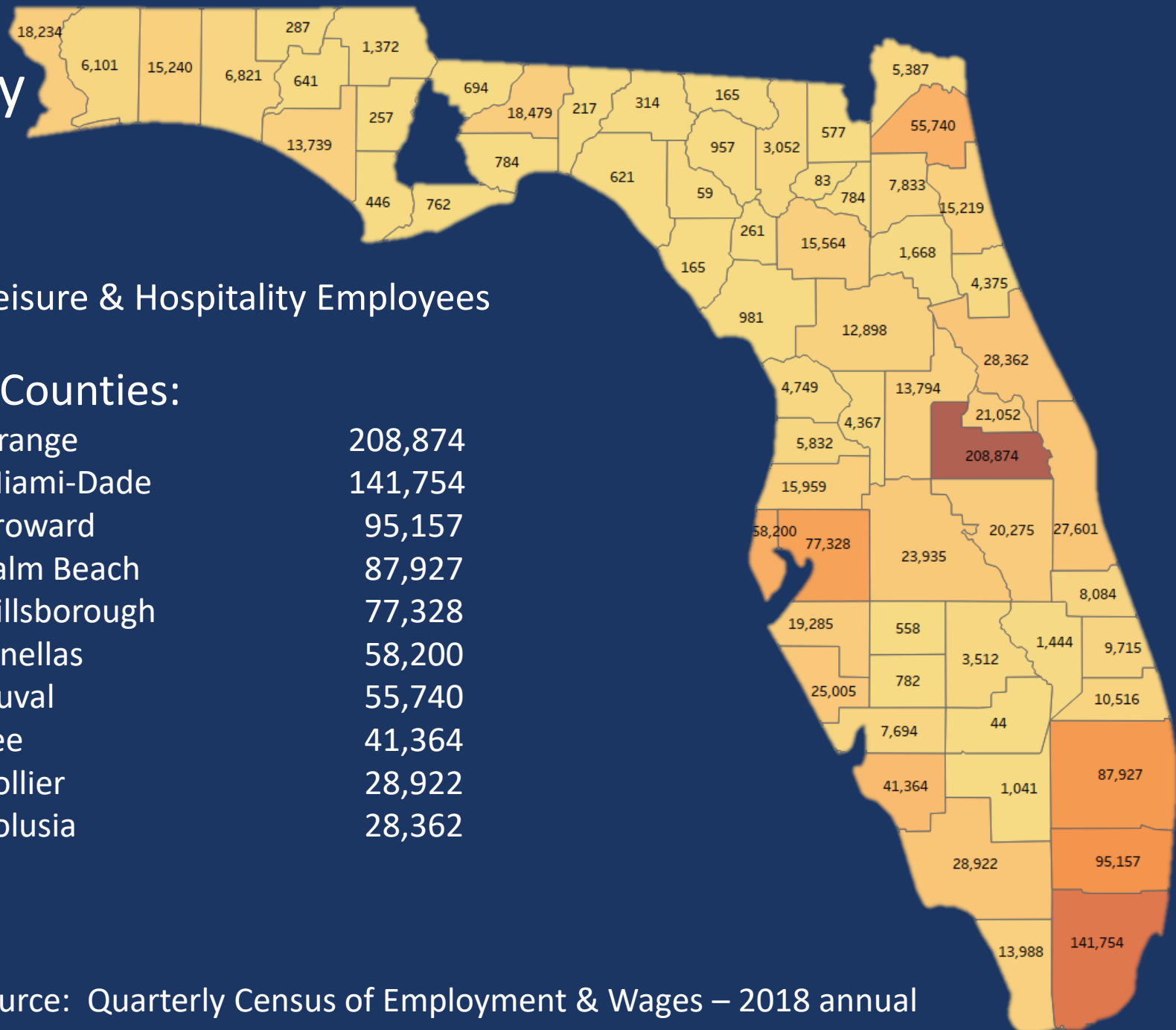


Leisure & Hospitality Jobs by County

Florida has 1,226,245 Leisure & Hospitality Employees

Top Counties:

1. Orange	208,874
2. Miami-Dade	141,754
3. Broward	95,157
4. Palm Beach	87,927
5. Hillsborough	77,328
6. Pinellas	58,200
7. Duval	55,740
8. Lee	41,364
9. Collier	28,922
10. Volusia	28,362



Quality of Life by County

Highest Percent of Leisure & Hospitality Jobs

40.5%
36.5%
29.9%
27.6%
27.1%
24.8%
22.8%
22.5%
21.8%
21.6%

The map displays the percentage of Leisure & Hospitality jobs for each of Florida's 67 counties. The data is as follows:

County	Percentage
Alachua	15.8%
Baker	19.0%
Bay	22.5%
Brevard	29.9%
Calhoun	14.4%
Charlotte	14.5%
Clay	15.8%
Collier	21.1%
Columbia	13.4%
DeSoto	7.5%
Duval	18.0%
Escambia	20.1%
Flagler	11.0%
Franklin	10.5%
Gadsden	8.4%
Galveston	11.7%
Hardee	12.1%
Hendry	27.6%
Hernando	17.4%
Highway	31.6%
Indian River	17.3%
Jefferson	10.6%
Lake	16.2%
Lee	11.3%
Leon	10.1%
Levy	13.6%
Liberty	14.5%
Madison	16.9%
Manatee	17.7%
Marion	15.3%
Matanzas	15.6%
Meade	14.9%
Monroe	12.7%
Morgan	12.4%
Murray	17.3%
Nassau	10.2%
Neptune	11.3%
Norfolk	18.5%
Osceola	3.3%
Okeechobee	14.8%
Oklawaha	15.4%
Orange	18.8%
Orlando	21.6%
Oswego	10.7%
Palm Beach	16.2%
Palm Bay	13.5%
Panama	14.1%
Polk	16.9%
Putnam	17.0%
Quitman	11.8%
St. Johns	18.4%
St. Lucie	21.8%
Sebastian	22.8%
Seminole	17.4%
Shades	13.2%
Sheldon	16.2%
Shirley	11.7%
Shirley	17.3%
Shirley	11.3%
Shirley	10.1%
Shirley	13.6%
Shirley	14.5%
Shirley	16.9%
Shirley	17.7%
Shirley	15.3%
Shirley	15.6%
Shirley	14.9%
Shirley	12.7%
Shirley	12.4%
Shirley	17.3%
Shirley	10.2%
Shirley	11.3%
Shirley	18.5%
Shirley	14.8%
Shirley	15.4%
Shirley	18.8%
Shirley	21.6%
Shirley	10.7%
Shirley	16.2%
Shirley	13.5%
Shirley	14.1%
Shirley	16.9%
Shirley	17.0%
Shirley	11.8%
Shirley	18.4%
Shirley	21.8%
Shirley	22.8%
Shirley	17.4%
Shirley	13.2%
Shirley	16.2%
Shirley	11.7%
Shirley	17.3%
Shirley	11.3%
Shirley	10.1%
Shirley	13.6%
Shirley	14.5%
Shirley	16.9%
Shirley	17.7%
Shirley	15.3%
Shirley	15.6%
Shirley	14.9%
Shirley	12.7%
Shirley	12.4%
Shirley	17.3%
Shirley	10.2%
Shirley	11.3%
Shirley	18.5%
Shirley	14.8%
Shirley	15.4%
Shirley	18.8%
Shirley	21.6%
Shirley	10.7%
Shirley	16.2%
Shirley	13.5%
Shirley	14.1%
Shirley	16.9%
Shirley	17.0%
Shirley	11.8%
Shirley	18.4%
Shirley	21.8%
Shirley	22.8%
Shirley	17.4%
Shirley	13.2%
Shirley	16.2%
Shirley	11.7%
Shirley	17.3%
Shirley	11.3%
Shirley	10.1%
Shirley	13.6%
Shirley	14.5%
Shirley	16.9%
Shirley	17.7%
Shirley	15.3%
Shirley	15.6%
Shirley	14.9%
Shirley	12.7%
Shirley	12.4%
Shirley	17.3%
Shirley	10.2%
Shirley	11.3%
Shirley	18.5%
Shirley	14.8%
Shirley	15.4%
Shirley	18.8%
Shirley	21.6%
Shirley	10.7%
Shirley	16.2%
Shirley	13.5%
Shirley	14.1%
Shirley	16.9%
Shirley	17.0%
Shirley	11.8%
Shirley	18.4%
Shirley	21.8%
Shirley	22.8%
Shirley	17.4%
Shirley	13.2%
Shirley	16.2%
Shirley	11.7%
Shirley	17.3%
Shirley	11.3%
Shirley	10.1%
Shirley	13.6%
Shirley	14.5%
Shirley	16.9%
Shirley	17.7%
Shirley	15.3%
Shirley	15.6%
Shirley	14.9%
Shirley	12.7%
Shirley	12.4%
Shirley	17.3%
Shirley	10.2%
Shirley	11.3%
Shirley	18.5%
Shirley	14.8%
Shirley	15.4%
Shirley	18.8%
Shirley	21.6%
Shirley	10.7%
Shirley	16.2%
Shirley	13.5%
Shirley	14.1%
Shirley	16.9%

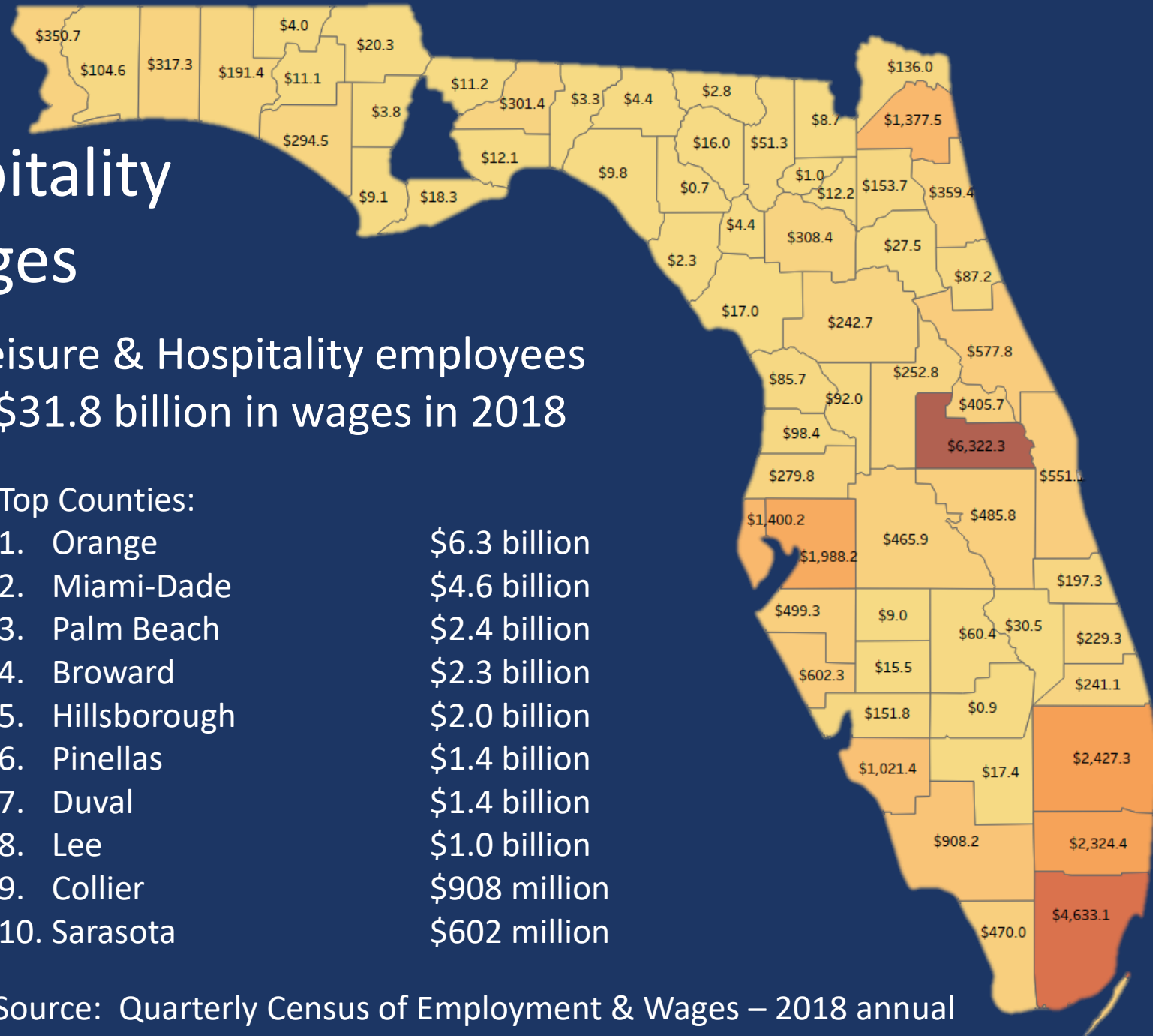
1.	Monroe	40.5%
2.	Franklin	36.5%
3.	Walton	29.9%
4.	Nassau	27.6%
5.	Orange	27.1%
6.	Osceola	24.8%
7.	St. Johns	22.8%
8.	Okaloosa	22.5%
9.	Flagler	21.8%
10.	Collier	21.6%

Leisure & Hospitality Annual Wages

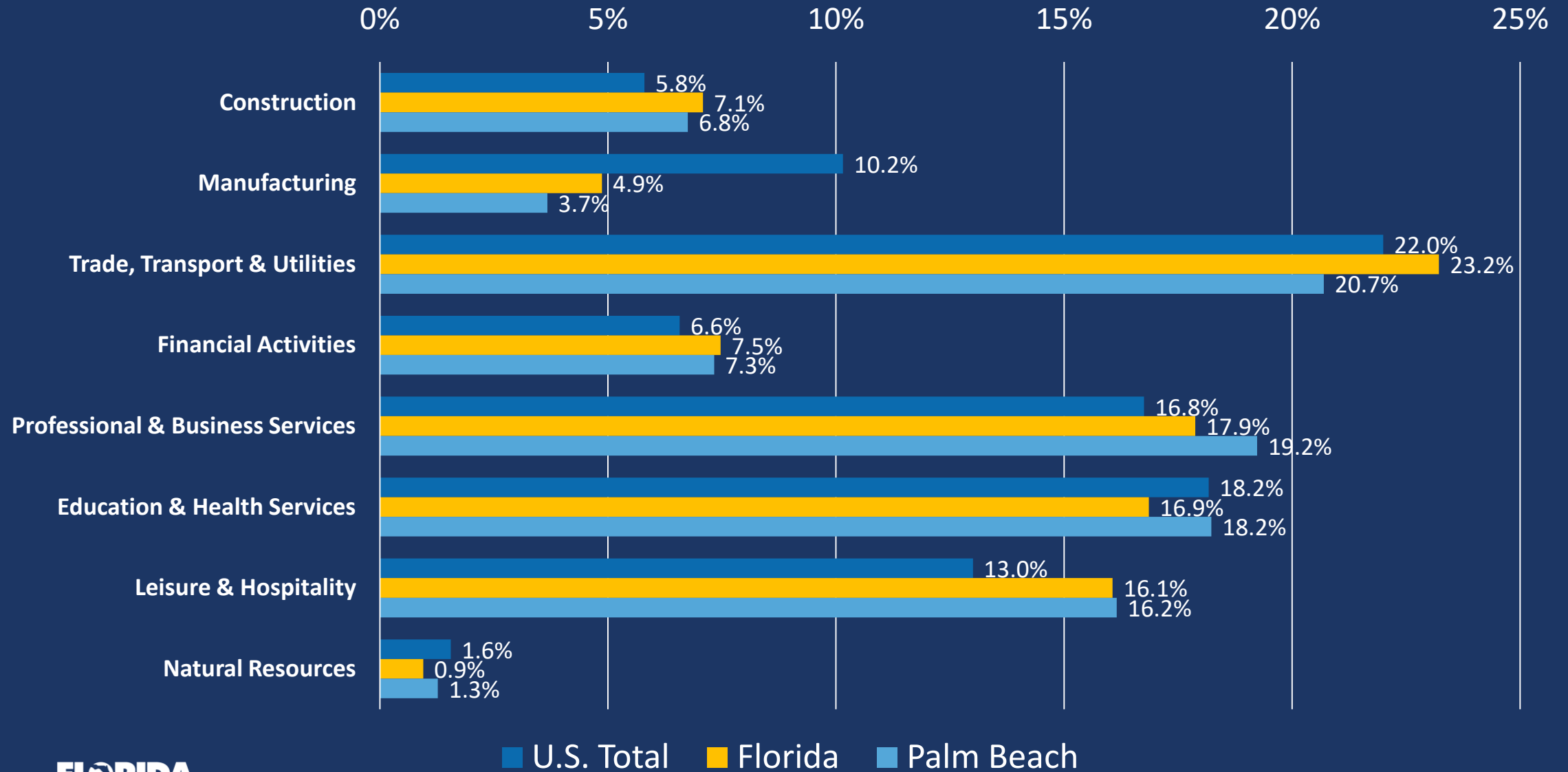
Florida Leisure & Hospitality employees
received \$31.8 billion in wages in 2018

Top Counties:

1. Orange	\$6.3 billion
2. Miami-Dade	\$4.6 billion
3. Palm Beach	\$2.4 billion
4. Broward	\$2.3 billion
5. Hillsborough	\$2.0 billion
6. Pinellas	\$1.4 billion
7. Duval	\$1.4 billion
8. Lee	\$1.0 billion
9. Collier	\$908 million
10. Sarasota	\$602 million




Share of Private Sector Jobs



Change in Share of Private-Sector Jobs: 2014-2018

2014-18 Change	Construction	Manufacturing	Trade, Transport & Utilities	Financial Activities	Professional & Business Services	Education & Health Services	Leisure & Hospitality	Natural Resources
U.S. Total	0.5%	-0.4%	-0.6%	-0.1%	0.2%	0.4%	0.3%	-0.2%
Florida	1.2%	-0.1%	-0.8%	-0.2%	0.6%	-0.1%	0.0%	-0.3%
Palm Beach	1.0%	0.3%	-0.8%	-0.3%	-0.1%	0.2%	0.0%	-0.1%



“Florida is changing. Our economics our **DEMOGRAPHICS** and our politics are all changing and these changes are both opportunities and challenges.” – Mark Wilson

“Our mission is to lead Florida to a new and sustainable economy.”

Florida's Next 4.5 Million People

Top 10 Growth in People

1. Miami-Dade	639,060
2. Orange	451,990
3. Hillsborough	412,926
4. Broward	329,843
5. Palm Beach	279,976
6. Duval	225,250
7. Lee	212,763
8. Osceola	178,394
9. Polk	171,439
10. Pasco	129,769

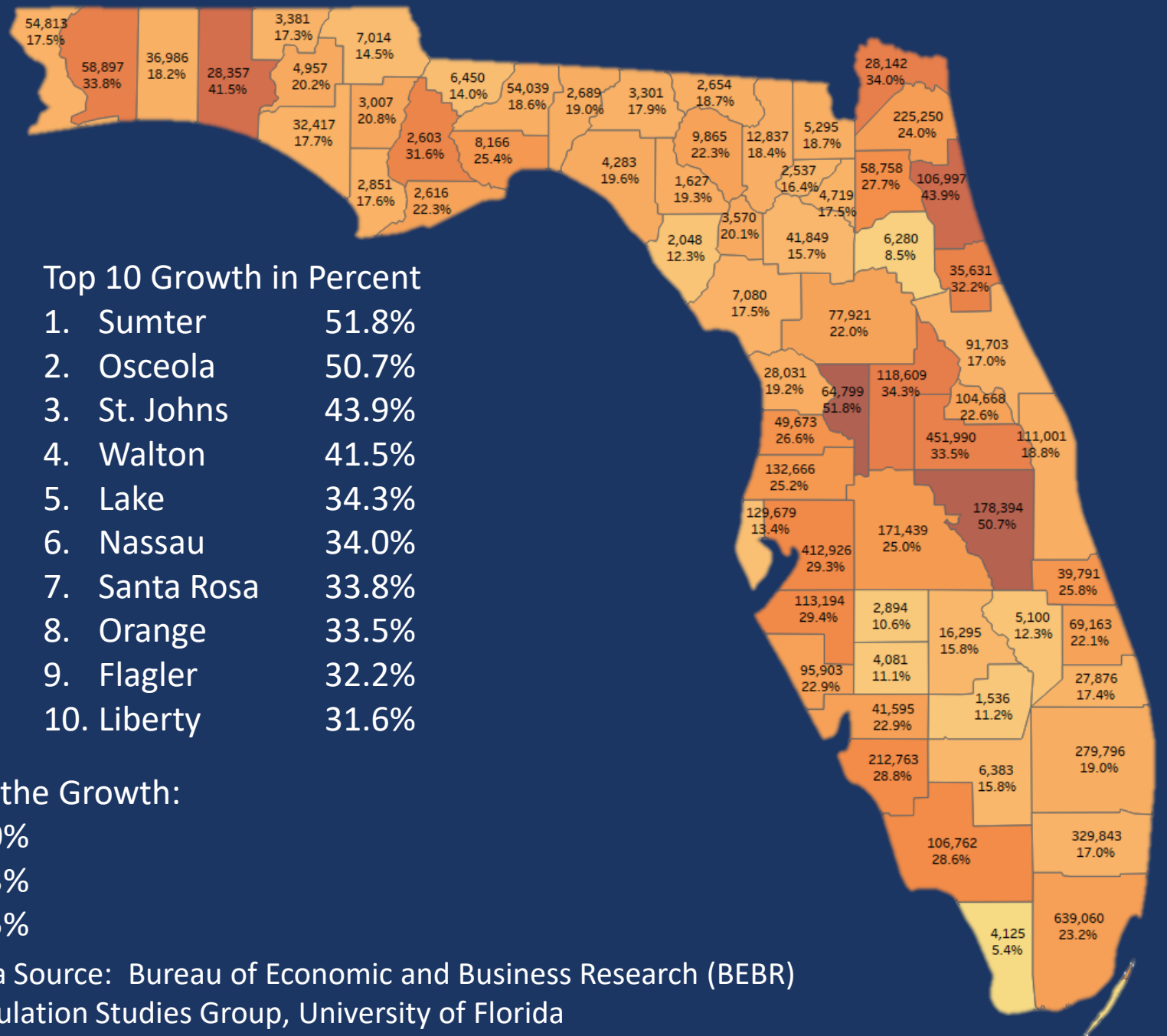
Top 10 Growth in Percent

1. Sumter	51.8%
2. Osceola	50.7%
3. St. Johns	43.9%
4. Walton	41.5%
5. Lake	34.3%
6. Nassau	34.0%
7. Santa Rosa	33.8%
8. Orange	33.5%
9. Flagler	32.2%
10. Liberty	31.6%

The top 3 Counties get 33.4% of the Growth:

Top 6:	52.0%
Top 11:	70.3%
Top 13:	75.5%

Data Source: Bureau of Economic and Business Research (BEBR)
Population Studies Group, University of Florida



Growth to 2030 by Age Group

Age Group

85+

80-84

75-
79

70-
74

65-69

60-
64

55-
59

50-
54

45-
49

40-
44

35-
39

30-
34

25-
29

20-
24

15-
19

0-14

0%

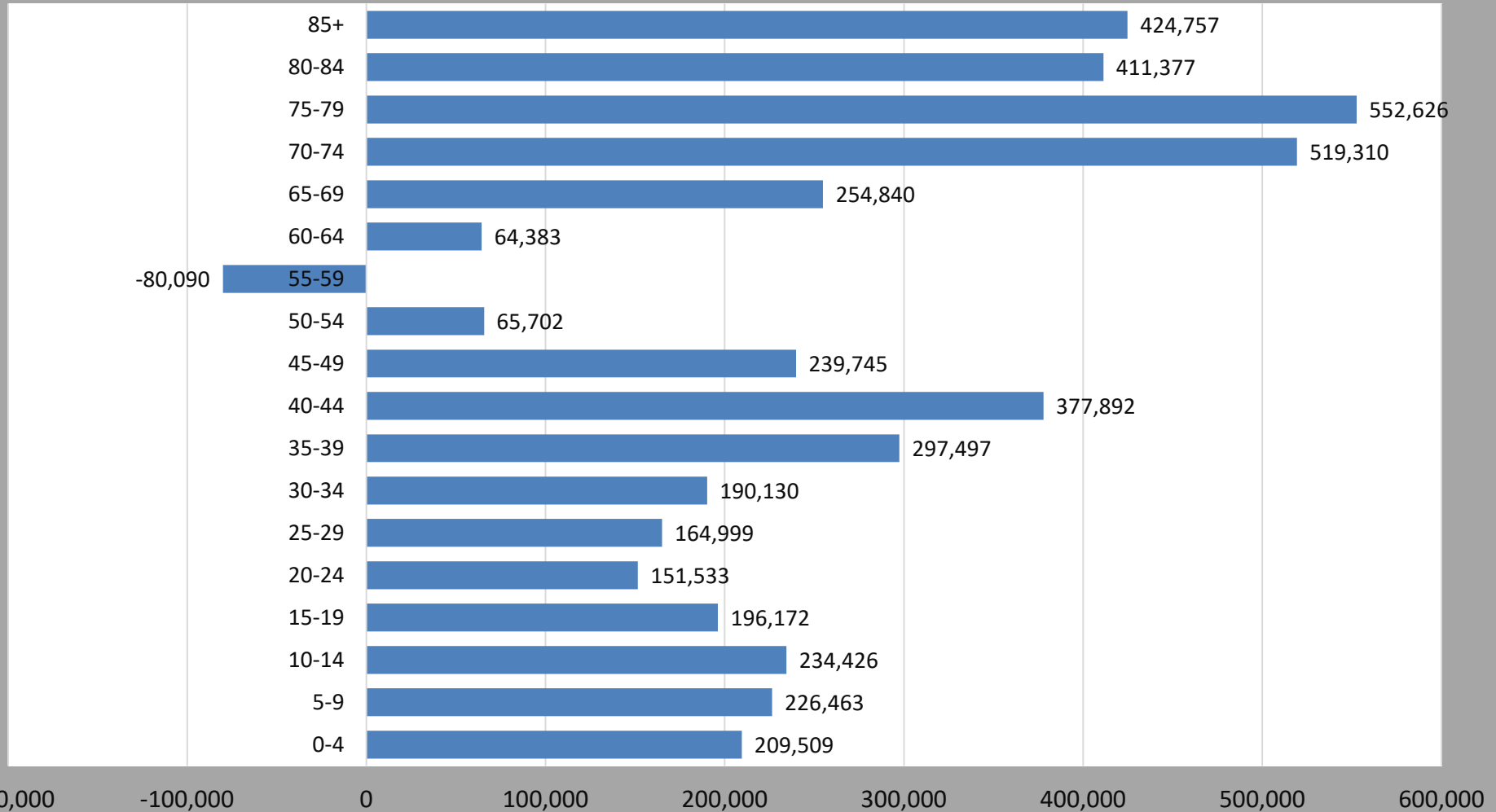
20%

40%

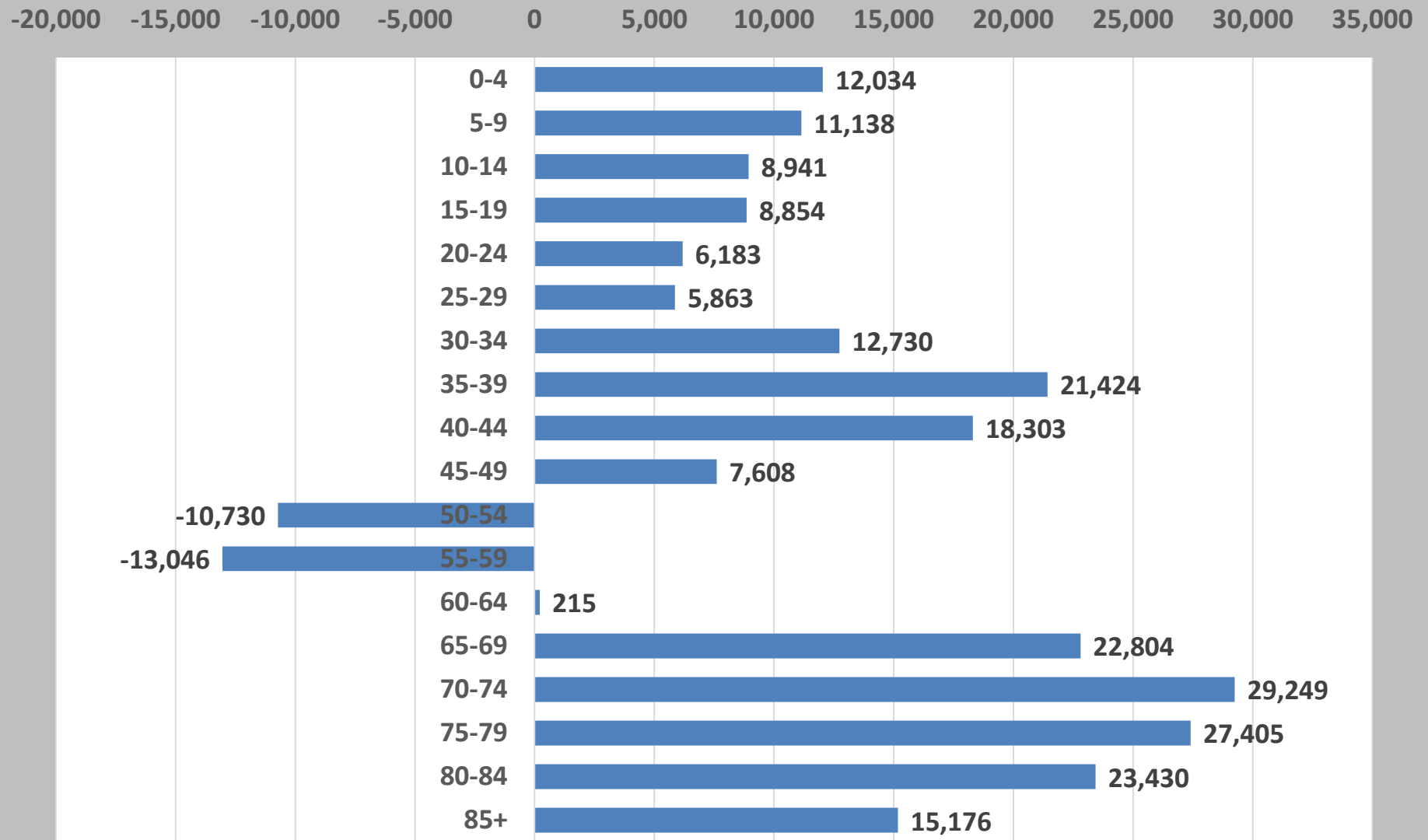
60%

80%

Florida's Next 4.5 Million People by Age Group



Palm Beach County Population Change - 2018 to 2030





Florida Chamber Foundation

LESS POVERTY, MORE PROSPERITY:

The Florida Fiscal Cliffs Report



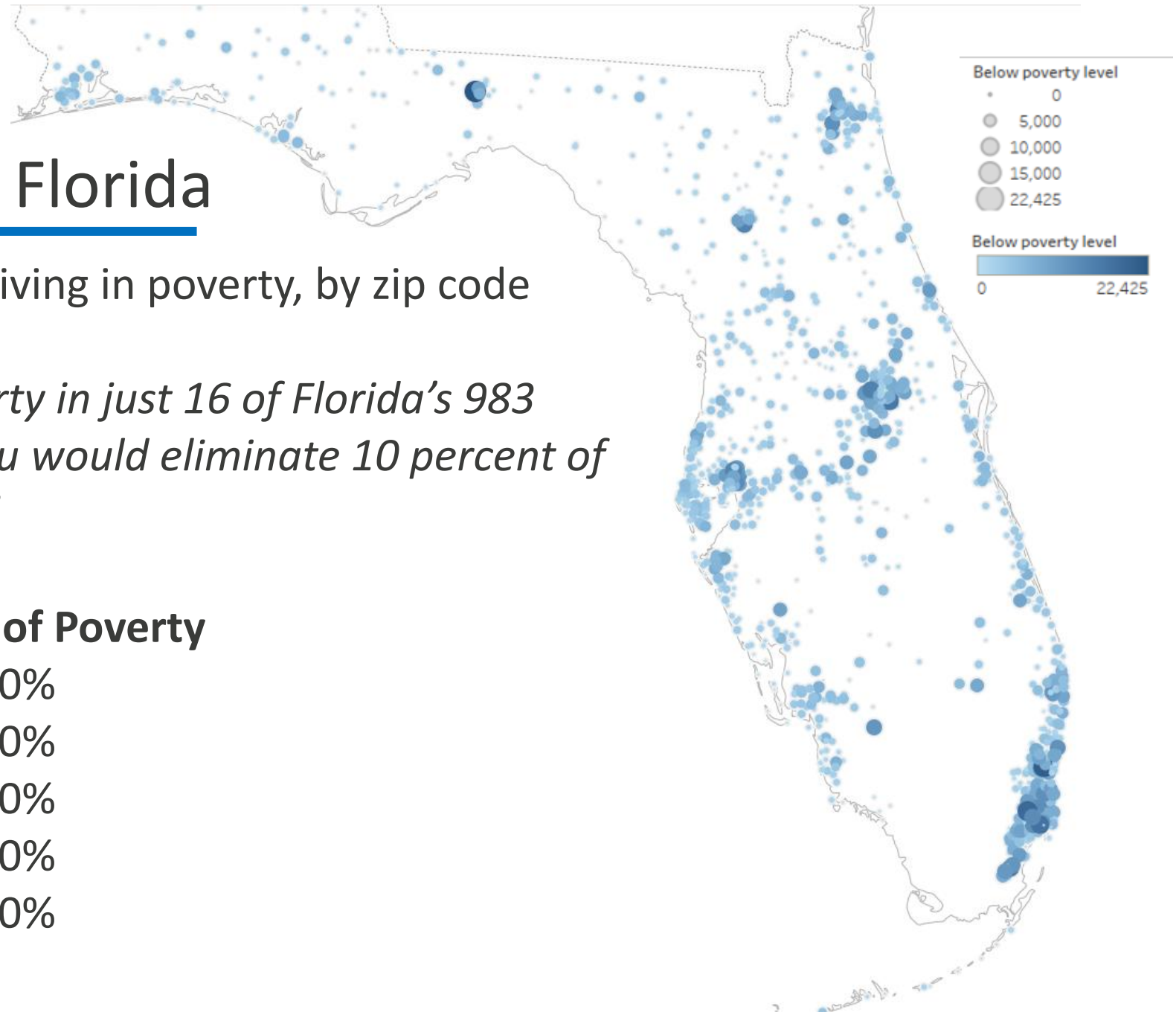
Child Poverty in Florida

901,772 kids under-18 living in poverty, by zip code

“If you eliminated poverty in just 16 of Florida’s 983 populated zip codes, you would eliminate 10 percent of child poverty in Florida”

Top Zip Codes Percent of Poverty

16	10%
39	20%
69	30%
105	40%
148	50%



Under-18 Poverty in Florida

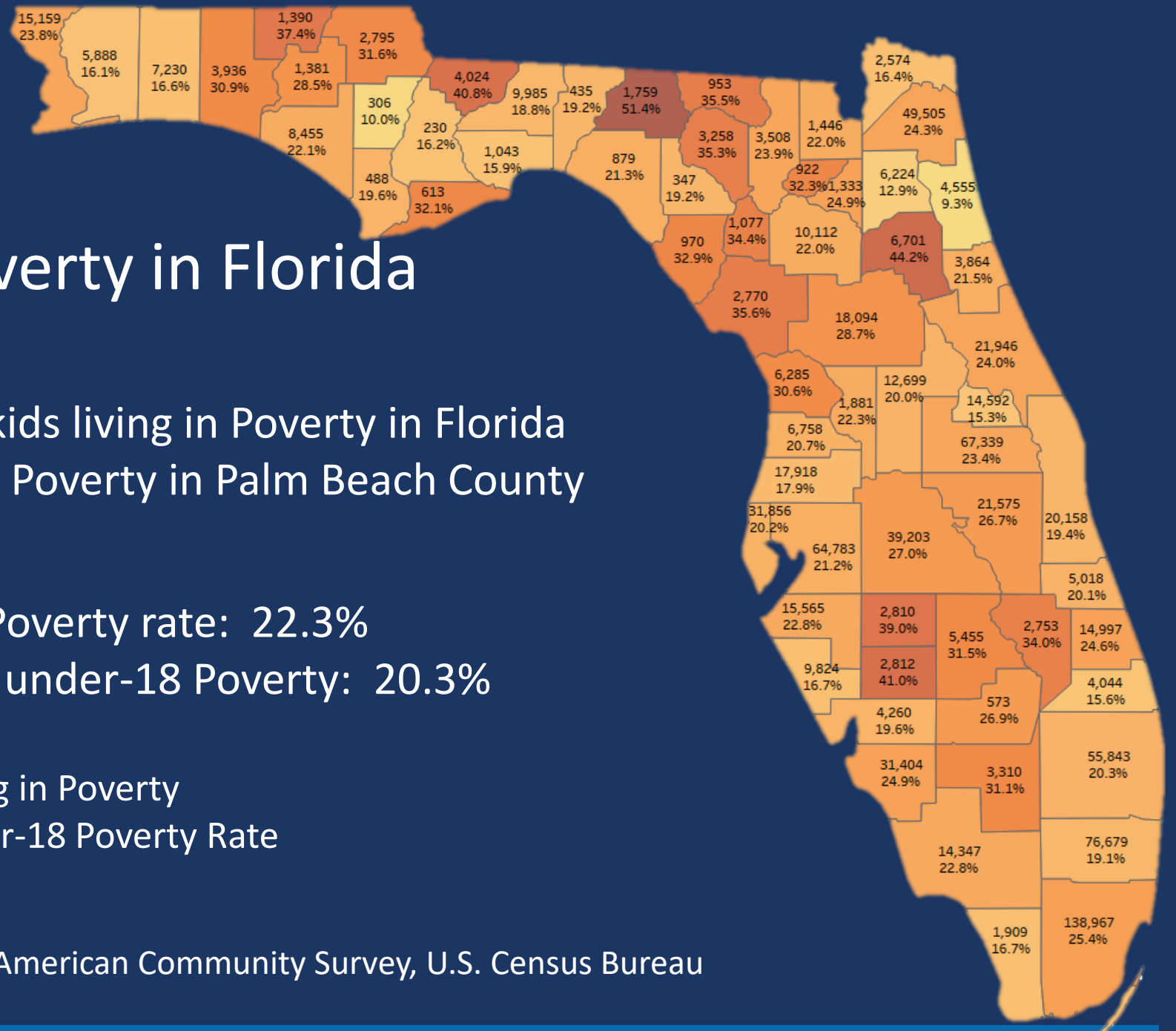
There are 901,772 kids living in Poverty in Florida
55,843 kids living in Poverty in Palm Beach County

Florida's under-18 Poverty rate: 22.3%

Palm Beach County under-18 Poverty: 20.3%

Top Number: Kids living in Poverty

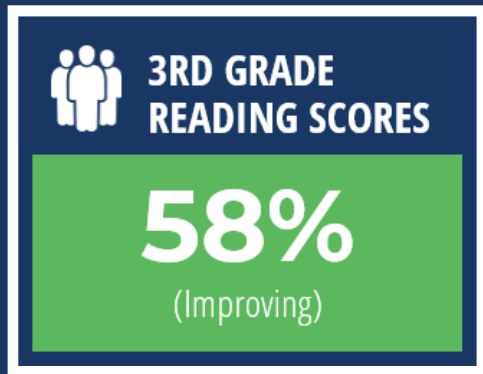
Bottom Number: Under-18 Poverty Rate



Data Source: American Community Survey, U.S. Census Bureau

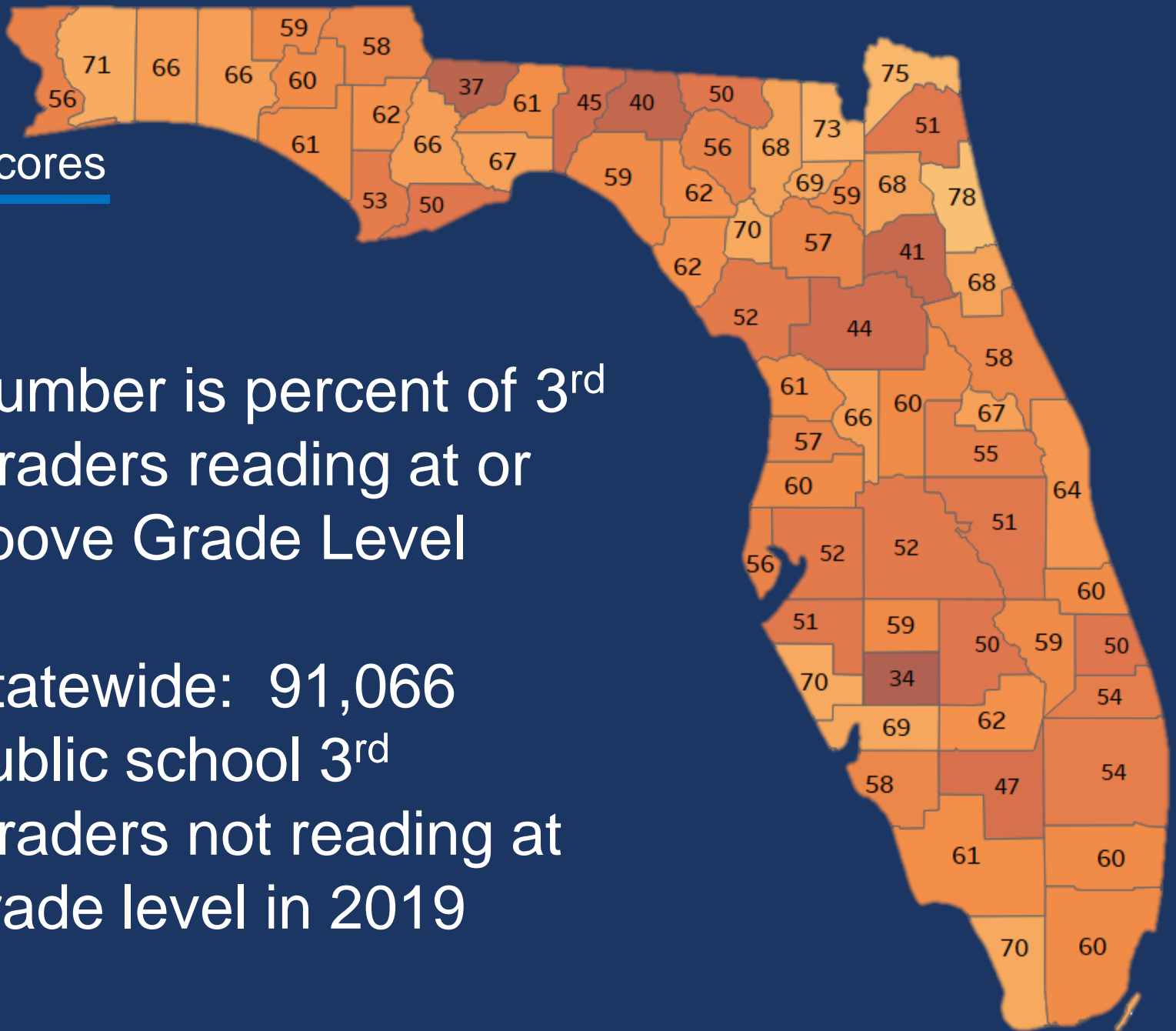
Florida's 3rd Grade Reading Scores

Florida



Number is percent of 3rd
Graders reading at or
above Grade Level

Statewide: 91,066
public school 3rd
Graders not reading at
grade level in 2019



3rd Grade Reading Scores and Changes from 2015-2019

Top Number: 2019 Percent of 3rd graders reading at or above grade level
Bottom Number: Percentage point change from 2015-2019

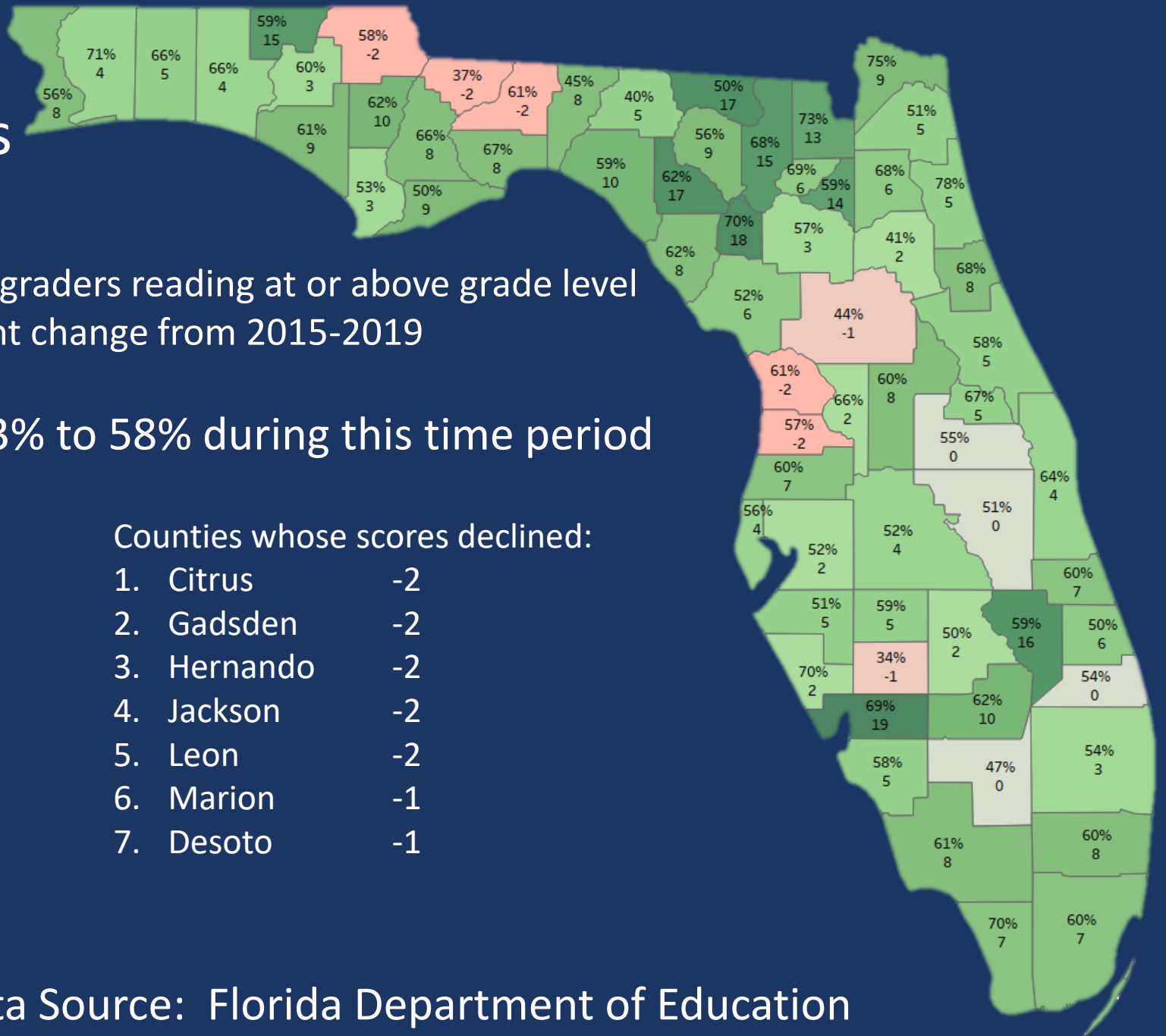
Florida score went from 53% to 58% during this time period

Top Improvements:

1. Charlotte	19
2. Gilchrist	18
3. Lafayette	17
4. Hamilton	17
5. Okeechobee	16
6. Columbia	15
7. Holmes	15
8. Bradford	14
9. Baker	13

Counties whose scores declined:

1. Citrus	-2
2. Gadsden	-2
3. Hernando	-2
4. Jackson	-2
5. Leon	-2
6. Marion	-1
7. Desoto	-1



TOP NEWS

Morgan Stanley sees global recession 'in three quarters' if Trump escalates trade war

Investors are not fully appreciating the effect of reduced capital expenditures, which could drive down global demand, according to the bank.



ECONOMY

IMF lowers its global economic growth forecast again as risks remain to the 'downside'

PUBLISHED TUE, JUL 23 2019 • 9:00 AM EDT



Fred Imbert
@FOIMBERT

SHARE



ECONOMY

Morgan Stanley sees 'credible bear case' for a US recession

PUBLISHED MON, JUL 22 2019 • 11:00 AM EDT | UPDATED MON, JUL 22 2019 • 3:16 PM EDT



Jeff Cox
@JEFFCOXCNCBCCOM

SHARE





TALENT
SUPPLY &
EDUCATION



INNOVATION &
ECON. DEVELOP.



INFRASTRUCTURE &
GROWTH LEADERSHIP



BUSINESS CLIMATE &
COMPETITIVENESS



CIVICS &
GOVERNANCE



QUALITY
OF LIFE

State of Florida Metrics (What is this?)

Florida FutureCast

Business Climate & Competitiveness

Click any metric to get more information!



PROBABILITY OF
FL RECESSION

29.9%

(Increasing)



FLORIDA LEADING
INDEX

66,800

Jobs



CONSUMER
SENTIMENT

97.2

(Improving)



CEO RANK

2nd

(Unchanged)



STATE LEGAL
CLIMATE RANKING

46th

(Unchanged)

Top 12

2030 Goal



SALES TAX
REVENUE

\$2.615

Billion per Month (Improving)



BUSINESS TAX
CLIMATE

4th

#1

2030 Goal



OPEN JOBS

289,700

(Increasing)

349,000

Unemployed Persons
(Declining)



STATE RANKING
FOR AUTOMOBILE
INSURANCE
AFFORDABILITY

#48



HOMEOWNERS'
INSURANCE
AFFORDABILITY

Homeowners' Insurance
Affordability data is available
at the county level.

[View Statewide Heat Map](#)



ASSIGNMENT OF
BENEFITS SUITS

34,289

January 2018



PROBABILITY OF
FL RECESSION

9.0%

(Unchanged)

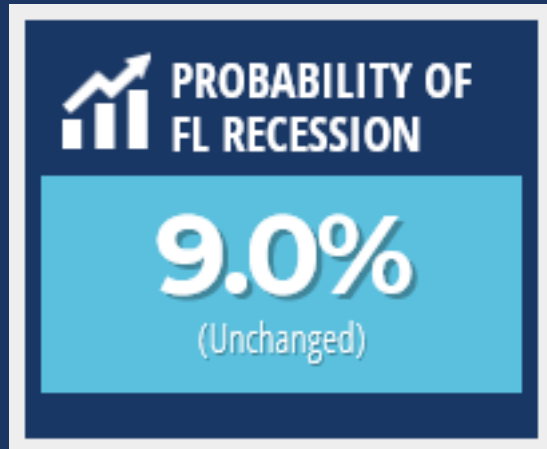


FLORIDA LEADING
INDEX

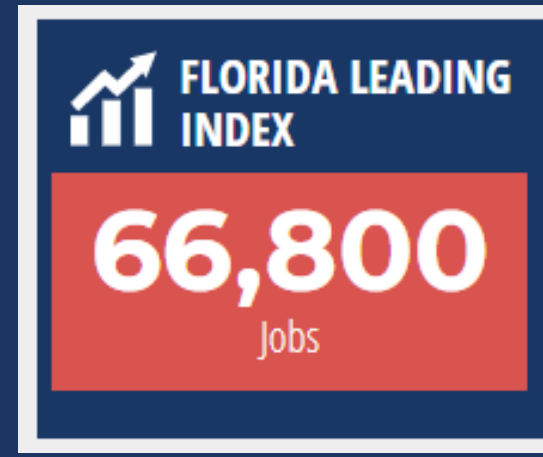
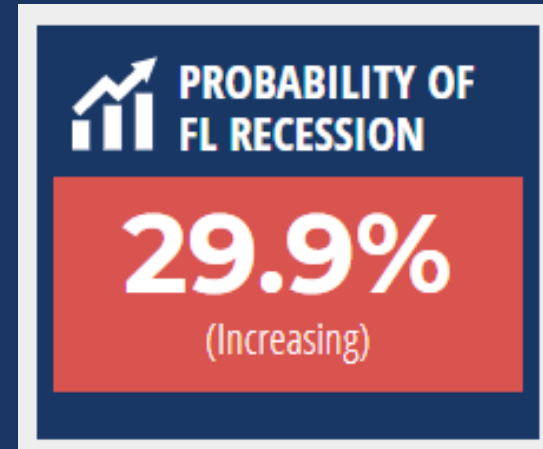
107,000

Jobs

January 2018



July 2019



Upcoming Events

Florida Chamber Foundation Military Defense & Veterans Summit


August 13-14, 2019

Hyatt Regency Jacksonville

Future of Florida Forum

October 28-30, 2019

Hyatt Regency Grand Cypress, Orlando

An aerial night photograph of a coastline, likely the Florida peninsula, showing a dense cluster of city lights along the coast and inland, contrasting with the dark blue of the surrounding ocean.

Jerry D. Parrish, Ph.D.
Chief Economist & Director of Research
jparrish@flfoundation.org
850.521.1283

www.FloridaChamber.com/PalmBeach