

Florida Chamber

Business Alliance for Early Learning

June 13, 2017





Vision

Every Generation Achieves Success – Cradle to Career



Mission

*To Align our Community Resources so
Everyone is Empowered to Achieve Success*

Why?



Cradle to Career Outcomes



Kindergarten
Readiness:
• **66.2%**

FLKRS: 2013/2014



3rd Grade Reading:
• **58%**
7th Grade Math:
• **46%**

Percent of students
passing (3 or above on
1-5 scale); 2017 and
2016 FSA, FDOE



High School
Graduation:
• **76.1%**

FDOE: 2015-2016



Educational
Attainment:
• 11.2% - less than HS
• 51.4% HS grad, some
college
• 12.4% Assoc.
Degree
• 25% Bachelors or
above

ACS 2015 Estimates



Median
Household
Income:
• **\$45K**

ACS & FRED, 12/16

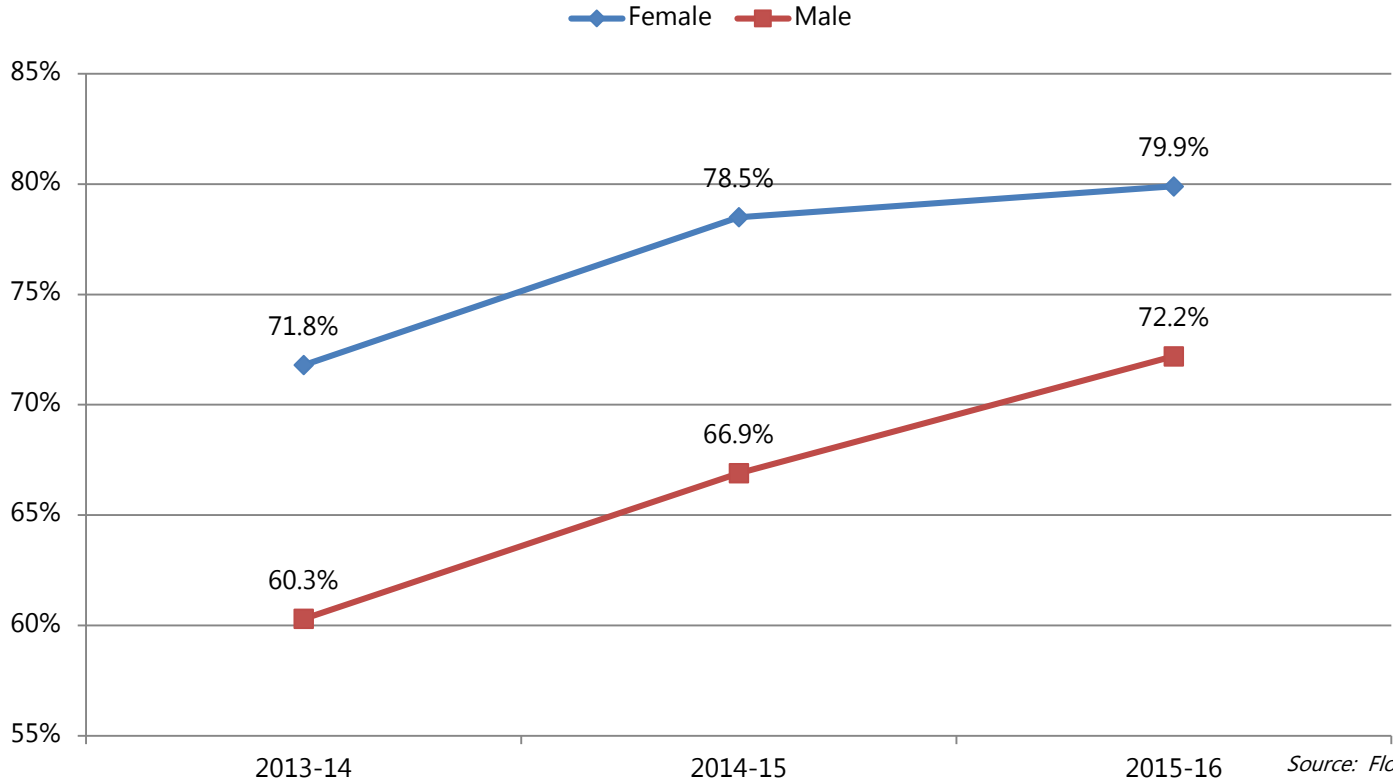


Graduation Rate by High School

<u>High School</u>	<u>2009-10</u>	<u>2013-14</u>	<u>2014-15</u>	<u>2015-16</u>
West Florida	95.2%	95.4%	92.5%	96.1%
Northview	71.5%	70.2%	78.9%	84.2%
J.M. Tate	68.0%	77.2%	80.2%	81.4%
Washington	73.1%	72.2%	83.9%	78.5%
Pensacola	57.4%	61.5%	73.0%	75.7%
Escambia	57.8%	60.1%	68.5%	74.5%
Pine Forest	56.2%	64.5%	67.9%	70.6%
State of Florida	74.5%	76.1%	77.9%	80.7%

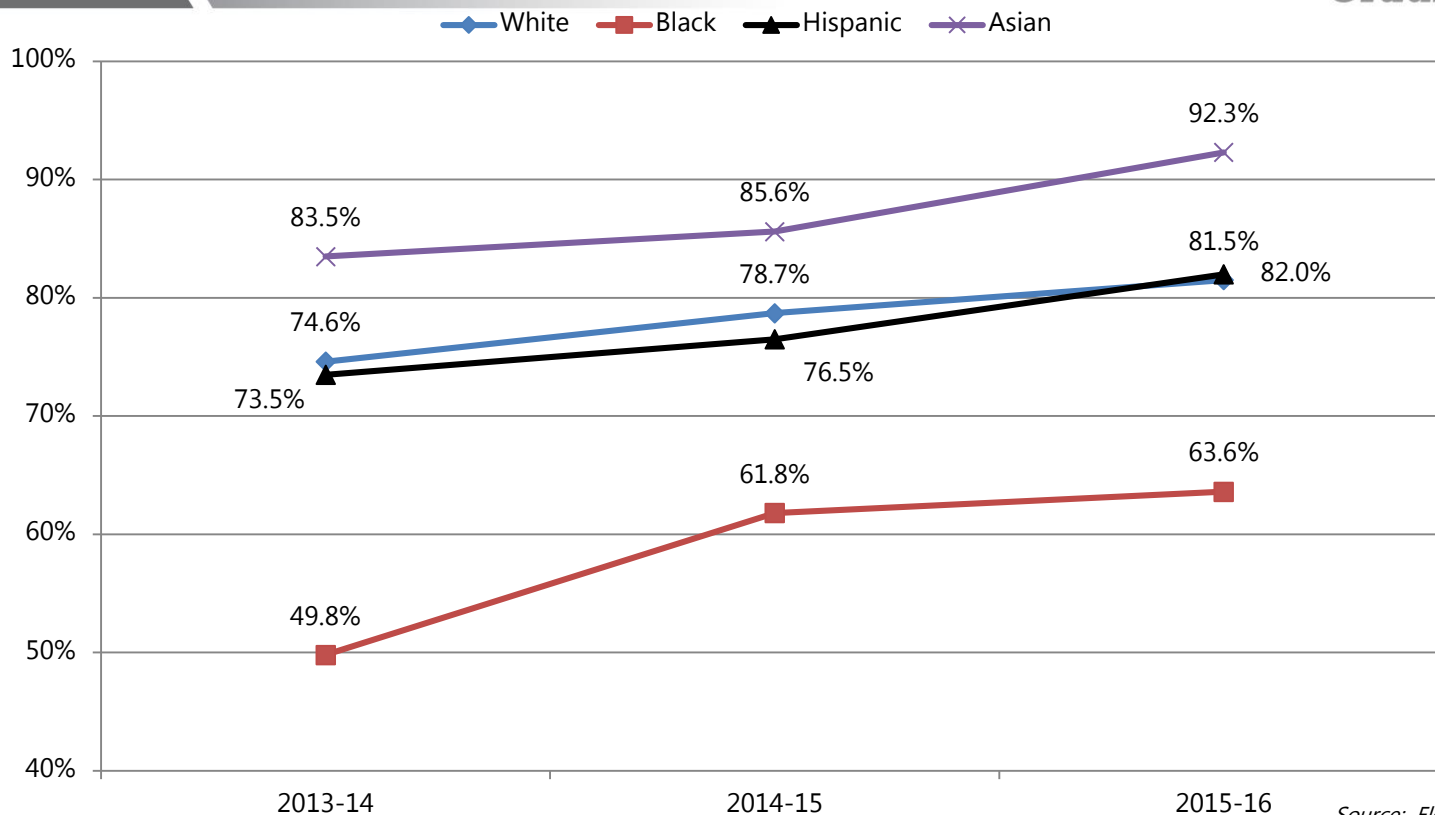
Source: Florida Department of Education

Graduation Rate by Gender



Source: Florida Department of Education

Graduation Rate by Race



Source: Florida Department of Education

Poverty/ALICE (Escambia County)



Escambia County Households (HH) – 117K

☐ Poverty

- < \$25K annual income (family of 4)
- **11%** - 13K (HH)



☐ ALICE

- **A**sset **L**imited, **I**ncome **C**onstrained, **E**mployed
- < \$45K annual income (family of 4)
- **27%** - 31K (HH)

38%

Program Rich & System Poor

CA Weis
Community School

Industry Roundtables

Cram the Van

ECARE

Junior Achievement

Career Academies

Financial Literacy

Mentoring
Programs

Children's Services
Council

TRiO

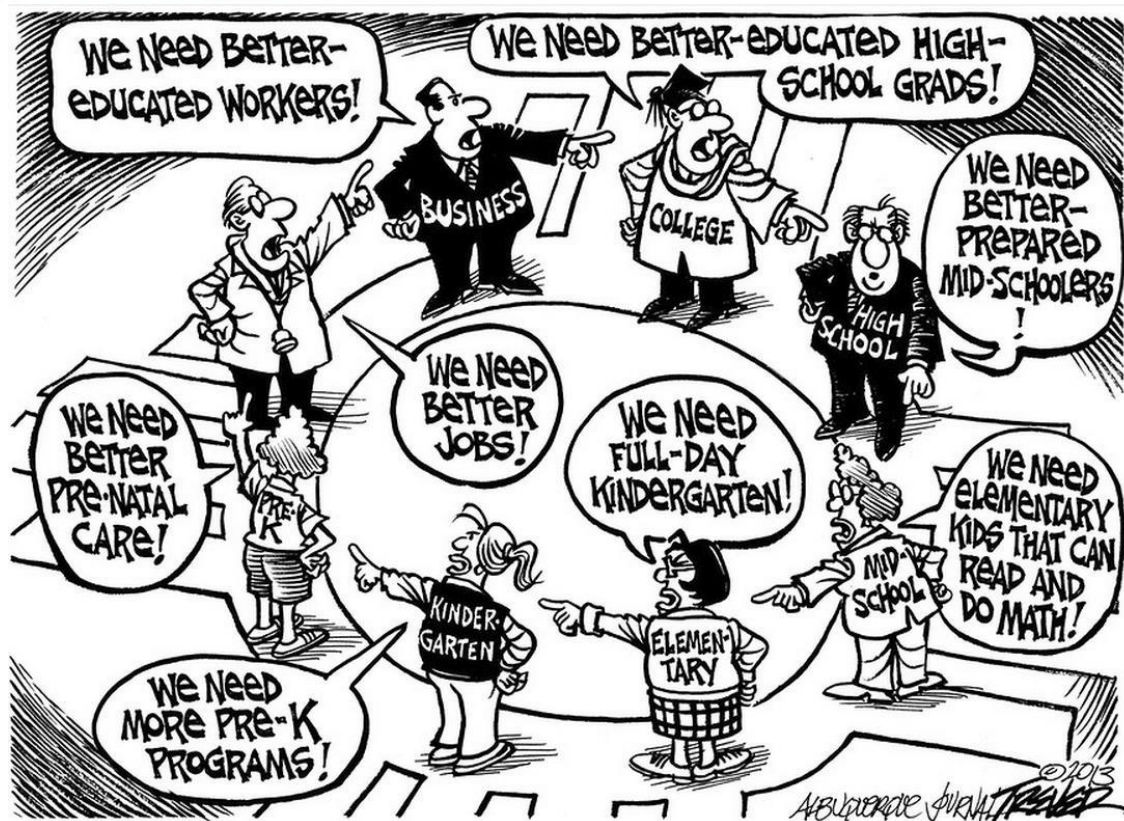
SkillsUSA

BEST Robotics



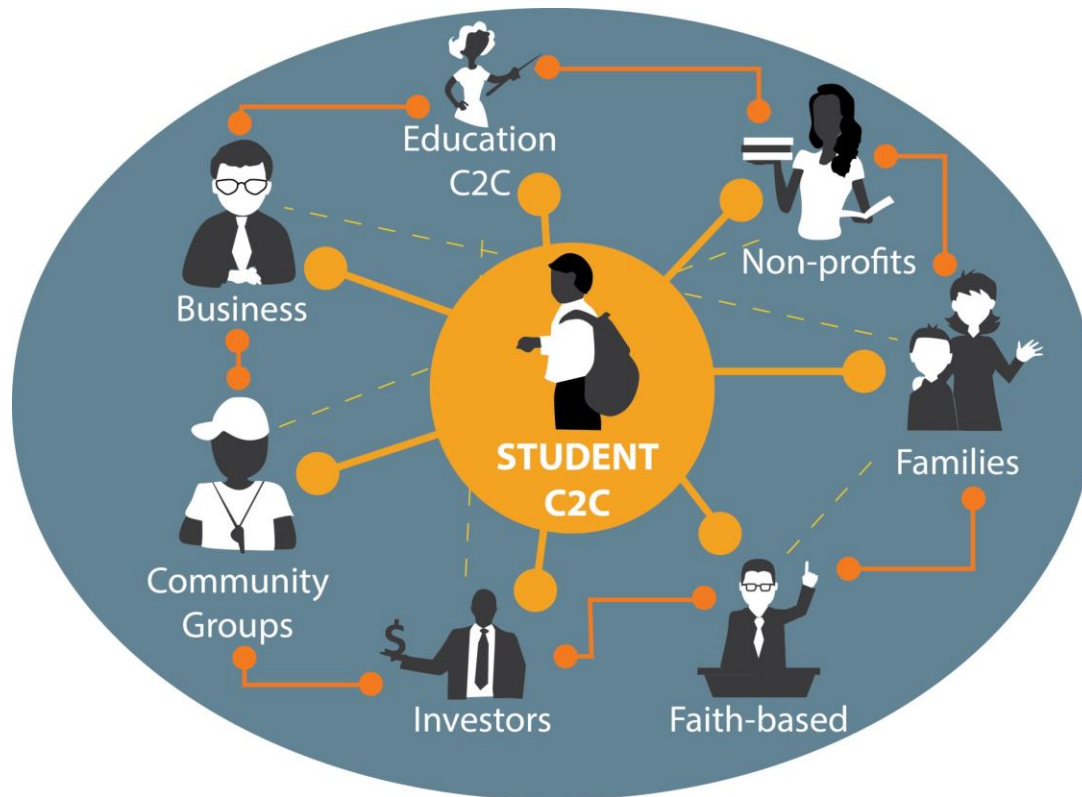
Need Coordinated Vision & Action

Systems Change



“The commitment of a group of actors from different sectors to a common agenda for solving a complex social problem”

Systems Change



Collective Impact National Network



75

COMMUNITY PARTNERSHIPS

building local infrastructure to improve education outcomes for every child



11,000+
ORGANIZATIONS
ENGAGED

★★★★★
★★★★★
★★★★★
★★★★★
★★★★★
★★

32 STATES
+ DISTRICT OF
COLUMBIA

StriveTogether
Every child. Cradle to career.



How We Got Here

Sept – Dec (2015)

- First Key Stakeholder Meeting
- One-on-one meetings (stakeholder outreach)
- Strategic assistance meetings/planning

January - April (2016)

- Planning Retreat (gathered input from 85+ leaders)
- Community Summit (gathered input from 250+ stakeholders)
- Finalized vision/mission/logo, governance structure, identification and prioritization of key outcome areas

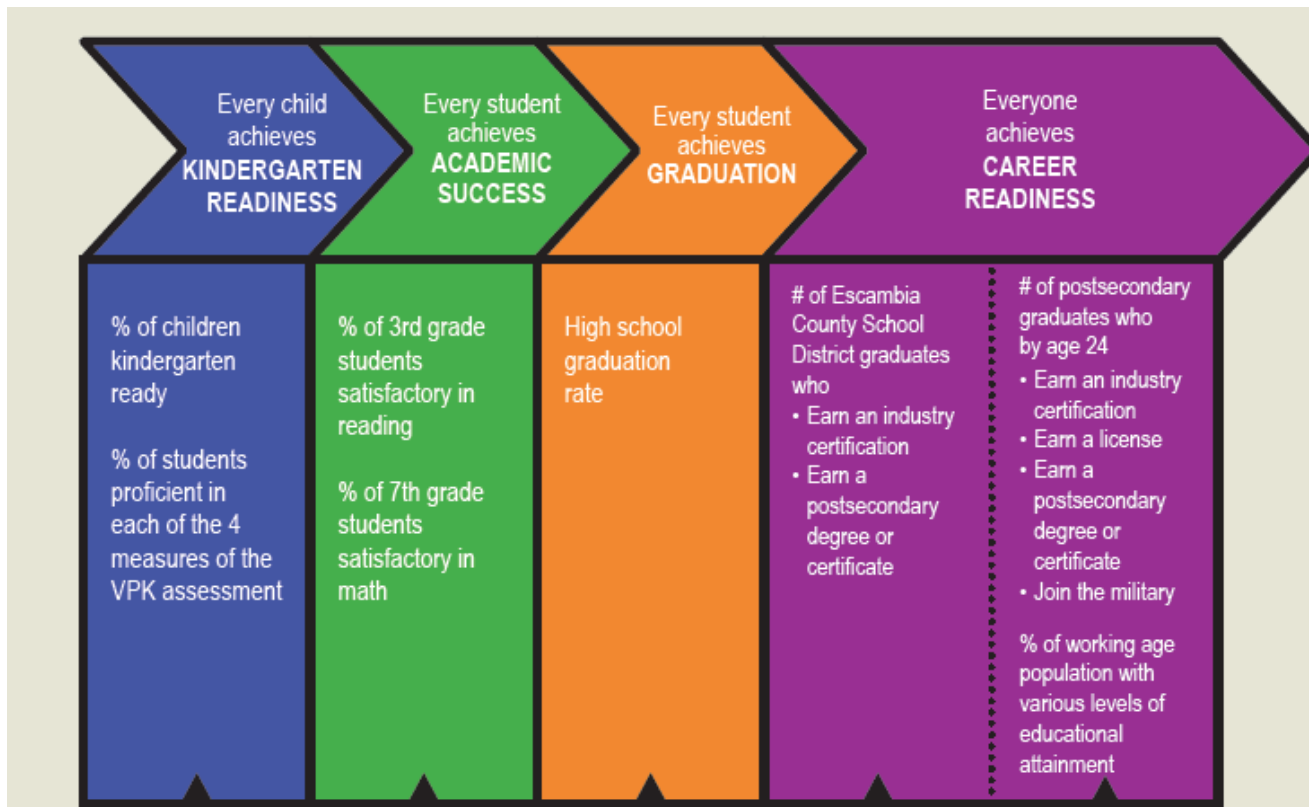
April – September (2016)

- Established Leadership Council
- Expanded Operational Support Team
- United Way became backbone convener
- Began Communications efforts
- Began Fundraising
- Drafted Data Roadmap

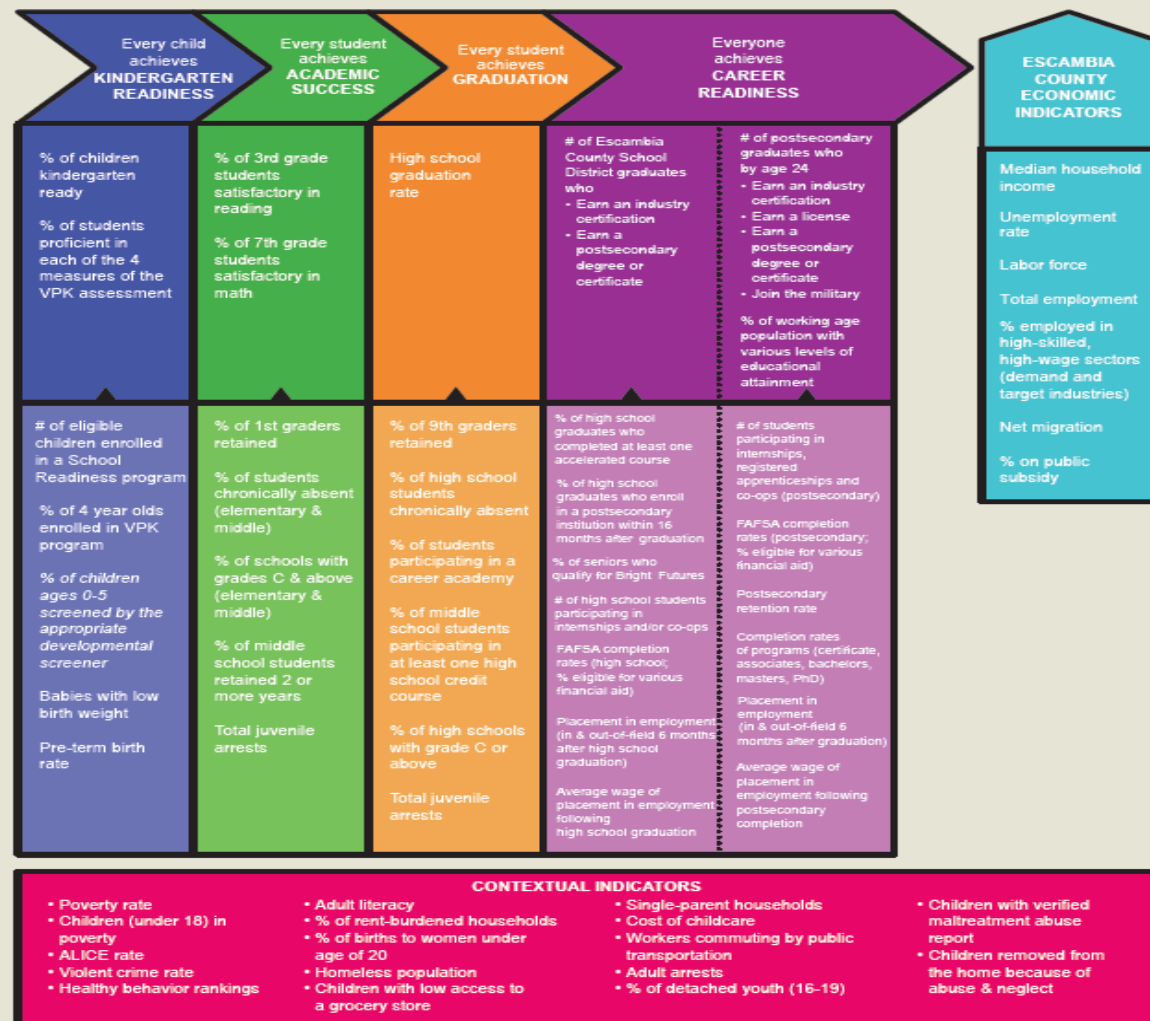
October - December (2016)

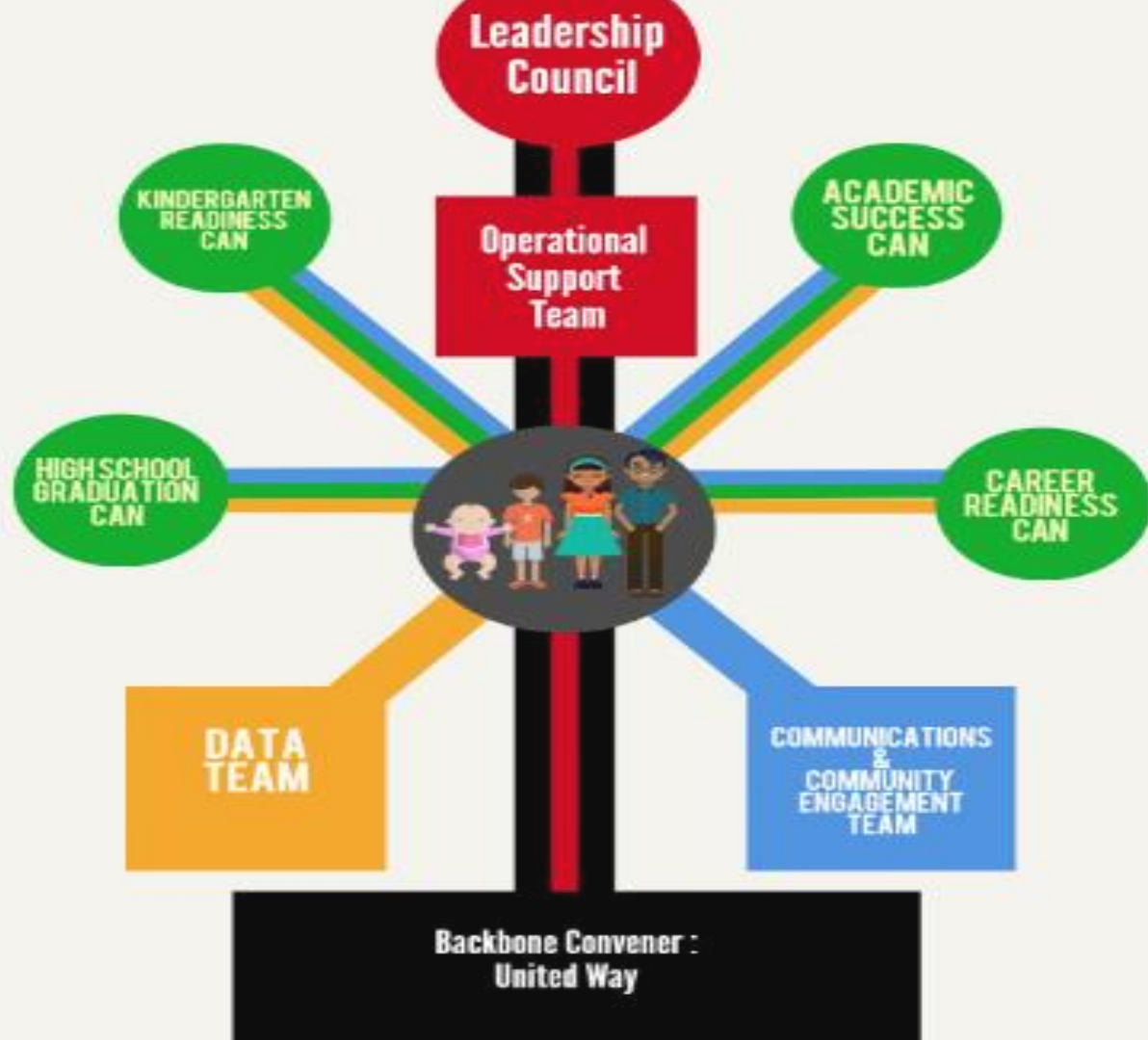
- Hired Director
- Hired VISTA
- Establish By-Laws/MoU with United Way
- Launched Kindergarten Readiness CAN
- Became formal Strive Together Network Community (first in Florida!)

Cradle to Career Roadmap

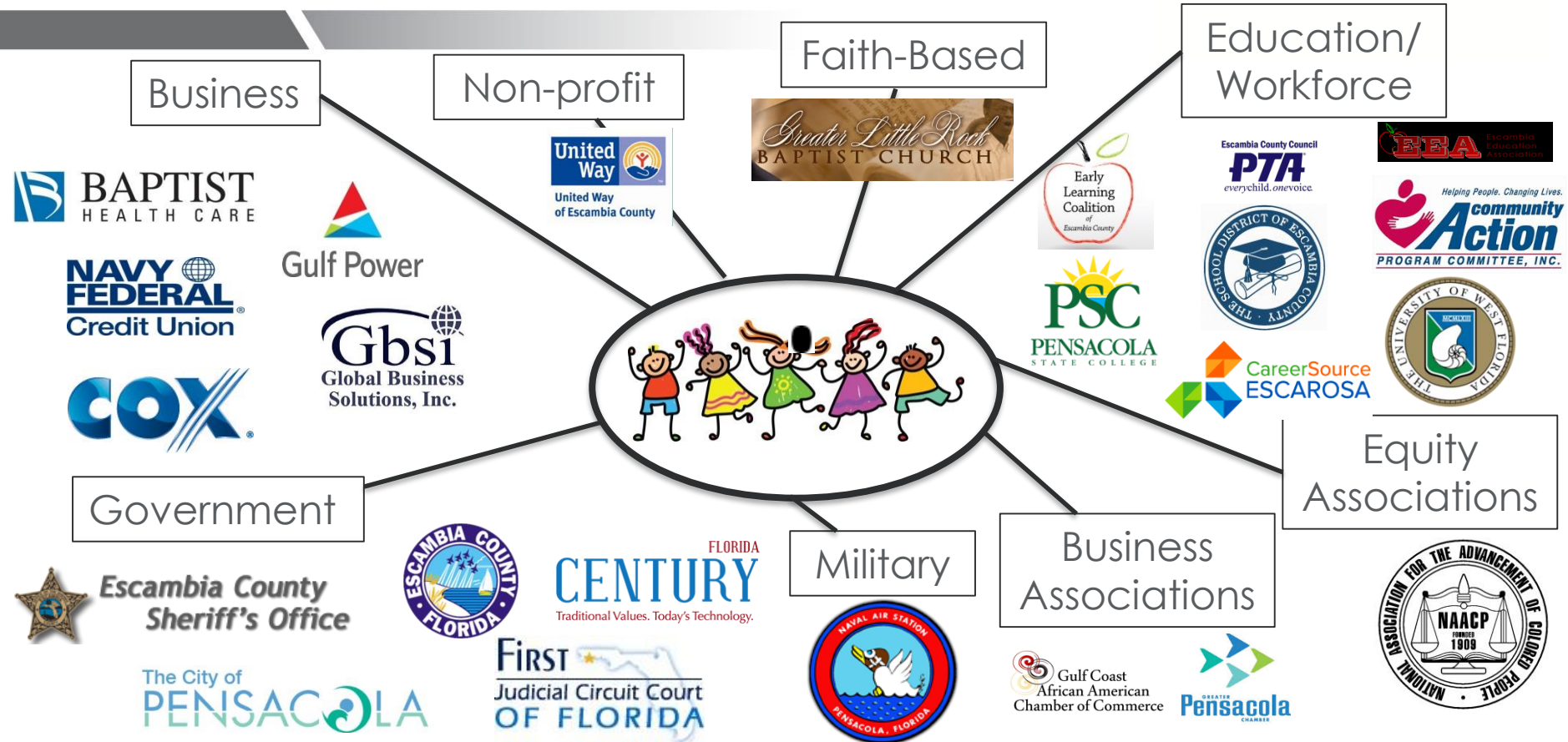


ROADMAP





Leadership Council



Collective Action Networks



DATA



KNOWLEDGE



ACTION



Improved outcomes

CAN Process

1. Verify outcomes & indicators
2. Map moving trains
3. Identify partner outcomes
4. Prioritize contributing indicators
- 5. Identify bright spots & opportunities**
- 6. Align resources & action; SCALE!**
7. Continually improve



☐ ITF 1: % of 4-year old's enrolled in VPK

- Co-chaired by Vicki Pugh, ELC and Deborah Nagle, CAPC, Inc.
- Current baseline
 - For the most recent school year (2015-2016), 63.3% of 4 year old's in Escambia County are enrolled in a voluntary pre-kindergarten program
 - The state comparison for the same time frame is: 78%

☐ ITF 2: % of children ages 0-5 screened by appropriate developmental screener

- Co-Chaired by MaryAnn Bickerstaff, ARC Gateway and Theresa Chmiel, Healthy Start Coalition
- Current screening is done inconsistently across providers or not at all
- For what is done, various screeners are used and results do not follow child
- ITF will address both what screener(s) to use, for what ages, and how we will implement this

Where We Are Headed - 2017



1st Quarter

- Kindergarten Readiness CAN: Map Moving Trains
- Finalization of Outcomes & Indicators
- Data Coordinator VISTA to begin

2nd Quarter

- Kindergarten Readiness CAN: Subcommittees Launch
- Data Sharing Agreements Developed As-Needed
- Website Launch
- Sector Outreach Lunch
- Fill Director Vacancy

3rd Quarter

- **Baseline Report Launch**
- **Online Dashboard Launch**
- CAN Project Implementation
- Input to United Way Investment Process
- StriveTogether Convening

4th Quarter

- **Career Readiness CAN Launch**
- Kindergarten Readiness Projects continue; scale



ABOUT TEAM PARTNERS CALENDAR DASHBOARD BLOG VIDEOS CONTACT 1-850-912-8177

Cradle to Career

What would it look like if there was a collective effort to ensure that everyone achieves generational success? Every child, every step of the way- cradle to career.

ABOUT US



Us

WHAT WE'RE UP TO
Recent Events

GET IN TOUCH
Contact Us

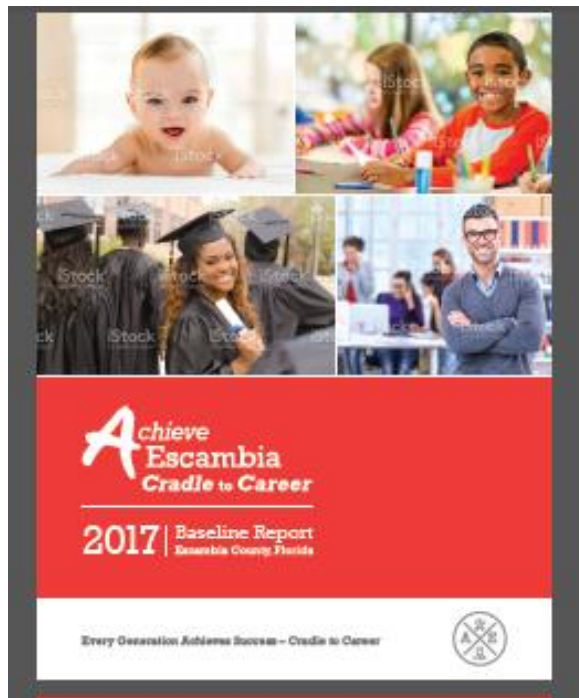


Find us on
Facebook

REA	TEAM MEMBERS ENGAGED	2017 ENGAGEMENT HOURS	ORGANIZATIONS ENGAGED
	102	411.5	52



Baseline Report



Funding Partners



*“Coming together is a beginning,
staying together is progress, and
working together is **success**.”*

Henry Ford
American Industrialist